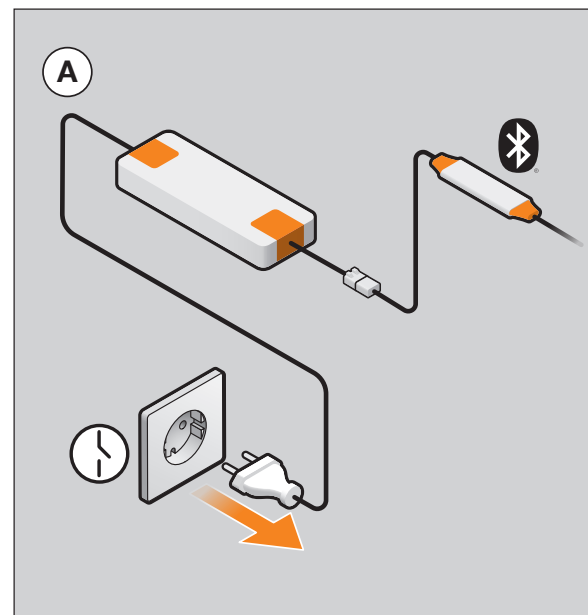


# Schlüter®-LIPROTEC-Zones

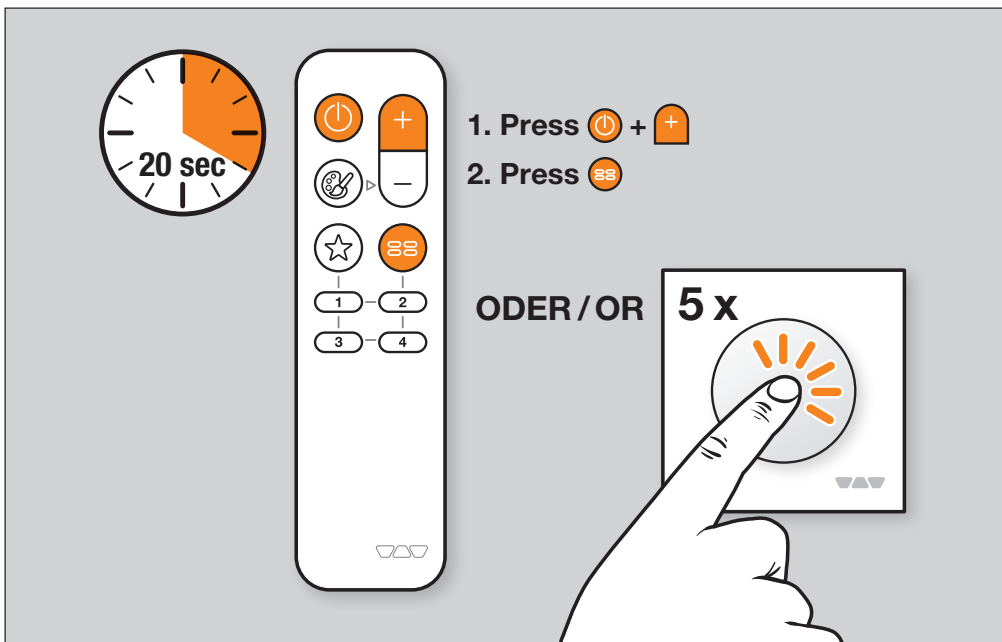
## Quickstart Guide



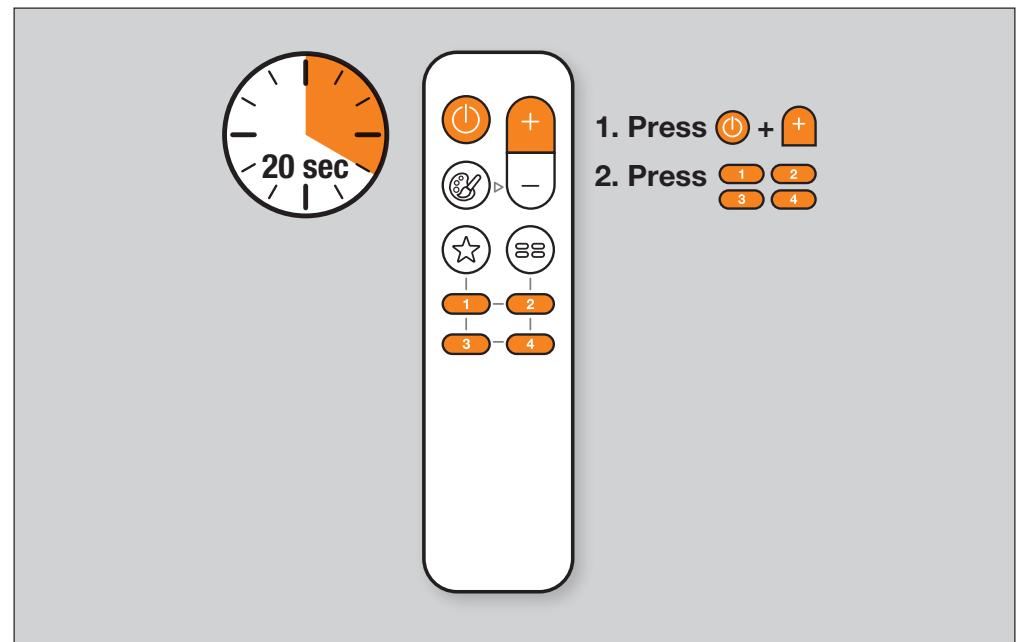
1a Spannungsversorgung trennen



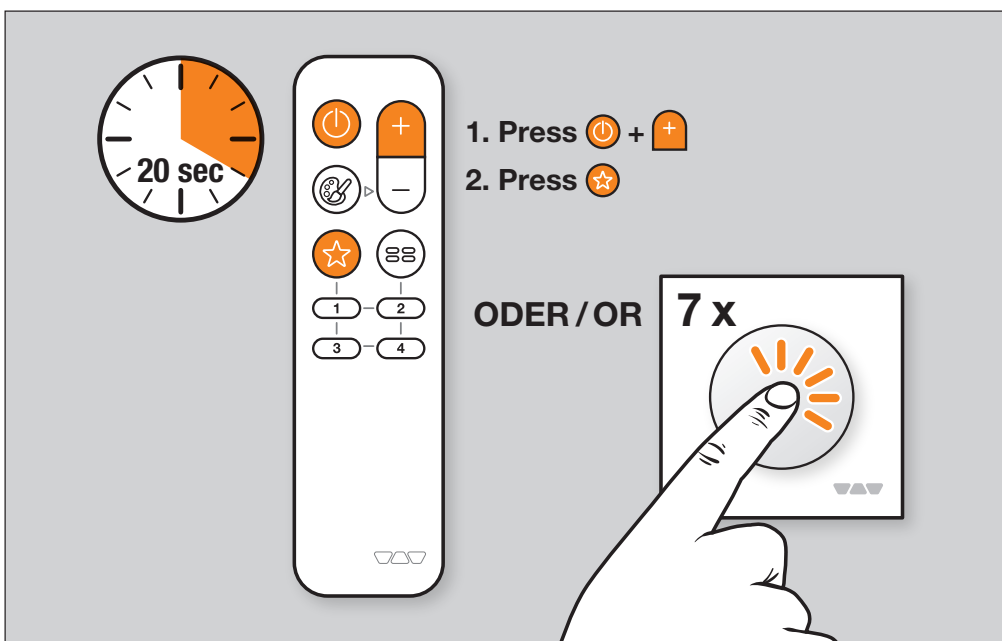
1b Spannungsversorgung wiederherstellen



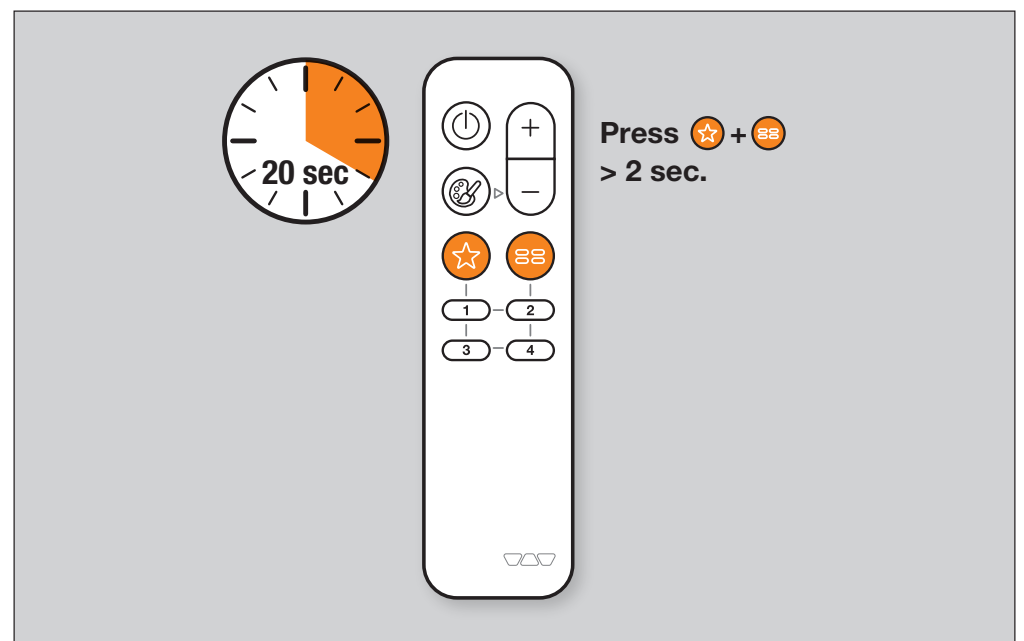
2 Anlernen von Receiver / Fernbedienung oder Drehtaster



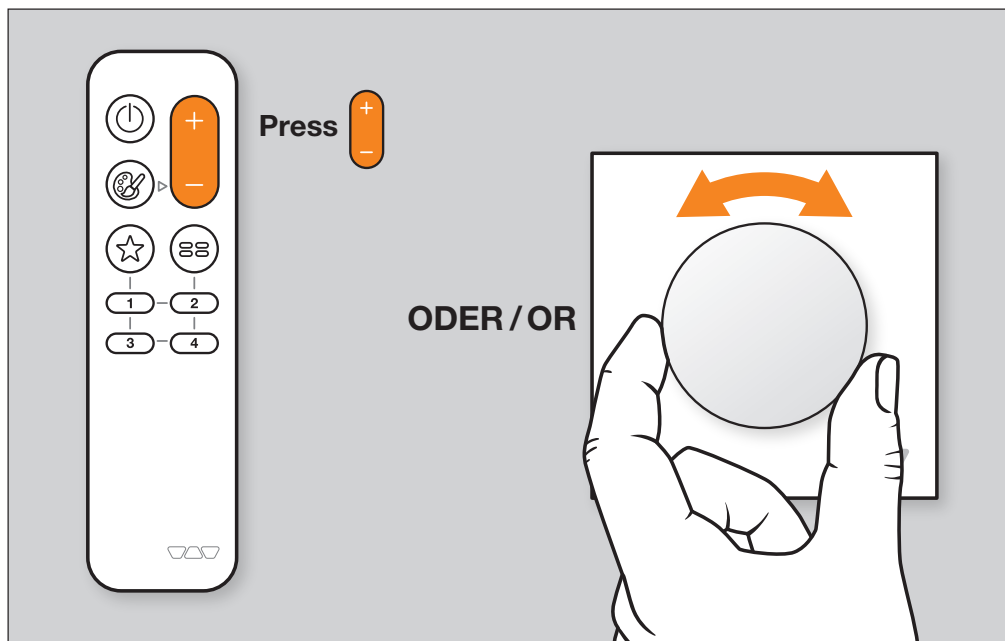
3 Gruppen hinzufügen



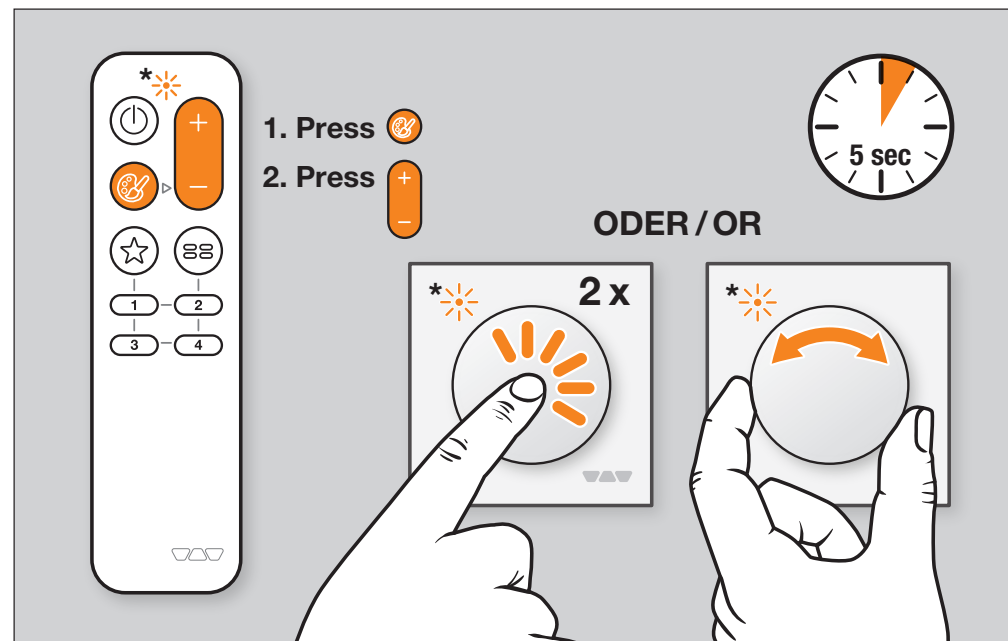
4 Fernbedienung zurücksetzen



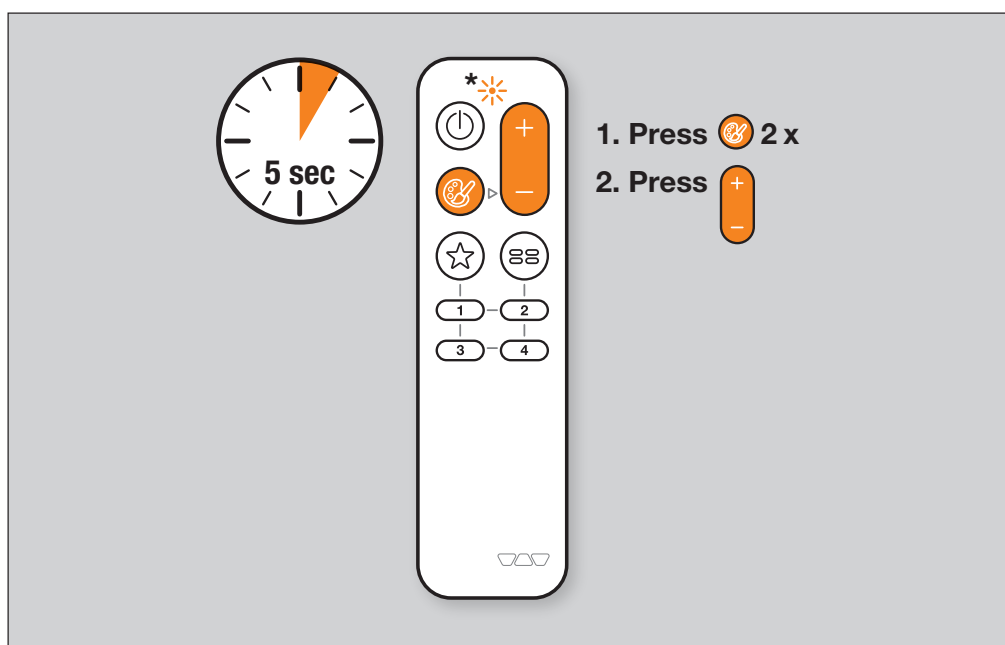
5 Receiver zurücksetzen



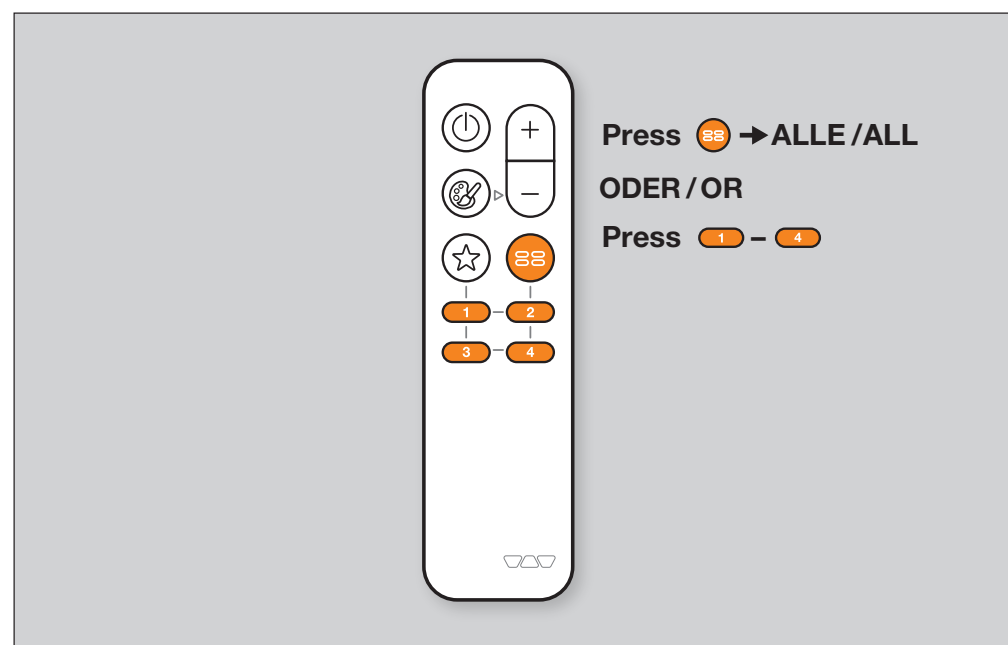
6 Dimmen



7 Farbtemperatur einstellen (nur RGB+W) · \* Status-LED: ● ● ●



8 Eingestellte Szenen durchgehen · \* Status-LED: ██████████



9 Gruppen auswählen

**EN** Schlüter®-LIPROTEC-Zones  
Quickstart Guide

- 1a Disconnecting the power supply
- 1b Reconnecting the power supply
- 2 Training the receiver / remote control or rotary control
- 3 Adding groups
- 4 Resetting the remote control
- 5 Resetting the receiver
- 6 Dimming
- 7 Setting the colour temperature (RGB+W only)
- \* Status LED: ● ● ●
- 8 Reviewing scene settings ·
- \* Status LED: ██████████
- 9 Selecting groups

**FR** Schlüter®-LIPROTEC-Zones  
Guide de prise en main rapide

- 1a Couper l'alimentation en tension
- 1b Rétablir l'alimentation en tension
- 2 Teach-in du receveur / de la télécommande ou du bouton de réglage
- 3 Ajouter des groupes
- 4 Réinitialiser la télécommande
- 5 Réinitialiser le receveur
- 6 Variateur
- 7 Régler la température de couleur (RVB+B uniquement)
- \* LED d'état : ● ● ●
- 8 Vérifier les scénarios réglés
- \* LED d'état : ██████████
- 9 Sélectionner des groupes

**IT** Schlüter®-LIPROTEC-Zones  
Quickstart Guide

- 1a Scollegare l'alimentazione
- 1b Ripristinare l'alimentazione elettrica
- 2 Inizializzazione del ricevitore / Telecomando o interruttore a manopola
- 3 Aggiungere gruppi
- 4 Resettare il telecomando
- 5 Resettare il ricevitore
- 6 Dimmerare
- 7 Regolare la temperatura colore (solo RGB+W)
- \* Status-LED: ● ● ●
- 8 Scorrere le scene pre-impostate
- \* Status-LED: ██████████
- 9 Selezionare i gruppi

**ES** Schlüter®-LIPROTEC-Zones  
Guía rápida

- 1a Desconectar la alimentación de tensión
- 1b Restablecer la alimentación de tensión
- 2 Programar receptor/ mando a distancia o pulsador giratorio
- 3 Añadir grupos
- 4 Reiniciar mando a distancia
- 5 Reiniciar receptor
- 6 Regular la intensidad luminosa
- 7 Ajustar la temperatura del color (solo RGB+W)
- \* LED de estado: ● ● ●
- 8 Recorrer escenas configuradas ·
- \* LED de estado: ██████████
- 9 Seleccionar grupos