

Schlüter®-SHOWERPROFILE-S / -R

Drainage
Floor-level showers

14.1
Product data sheet

Application and function

Schlüter-SHOWERPROFILE-S is a two-piece triangular profile designed to cover the adjoining tile edges that become exposed as the shower floor slopes to accommodate linear drainage. The triangular profile is made of stainless steel V4A, which is available with either a brushed finish or a high-quality powder coating, and has a fleece fabric laminated on the reverse side for bonding with the tile adhesive. It is designed to be inserted into the U-shaped groove of the matching rigid PVC support profile. The profile can be used as a lateral wall transition or as a lateral transition to the adjoining floor. The PVC support profile is available in 6 heights from 5 mm to 22 mm to work with covering thicknesses of 6 mm or greater. The triangular profiles, are supplied in lengths of 120 cm, 160 mm and 200 cm and have a height of 6 or 10 mm at the low side (H1) and feature a slope of 2% (increase of 2 mm for each 10 cm section). The profile is cut to size at the low and/or high side to produce the necessary profile height and length. Additional height adjustment can be achieved by inserting the profile into the U-shaped attachment at a specific depth.

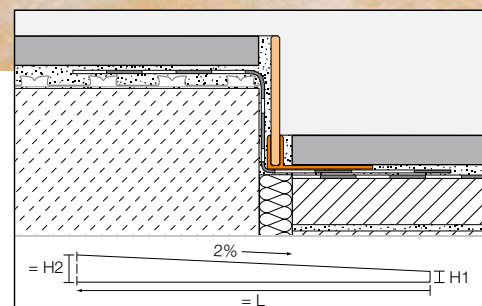
Schlüter-SHOWERPROFILE-R is a two-piece wall transition profile made of stainless steel V4A, available either with a brushed finish or a high-quality powder coating, for covering the wall area exposed due to the use of a wedge with a linear drainage channel. The profile has a fleece fabric laminated on the reverse side for bonding with the tile adhesive. Due to its two-piece design, SHOWERPROFILE-R can be seamlessly adjusted to any height between 23 and 45 mm (available in two versions). The pro-



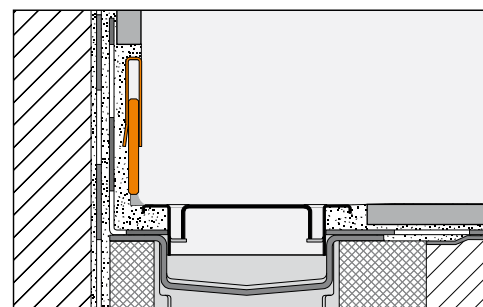
file is supplied in lengths of 100 and 140 cm and can be cut to the required size.

Material

stainless steel V4A
Material no. 1.4404 = AISI 316L
EB = brushed stainless steel V4A
TS = textured coated stainless steel V4A
The profiles have a fleece fabric laminated on the reverse side for bonding with the tile adhesive. The SHOWERPROFILE-S support profile is made of recycled rigid PVC. The visible surface of the profile in the brushed stainless steel variant is covered with a protective foil.



Schlüter®-SHOWERPROFILE-S



Schlüter®-SHOWERPROFILE-R



Material properties and areas of application:

SHOWERPROFILE-S and -R are available in a wide variety of finishes. Their suitability must be verified in applications exposed to chemical or mechanical stresses. The information provided below is intended as a general guideline. SHOWERPROFILE-S and -R of stainless steel V4A (material no. 1.4404 = AISI 316L), are especially suitable for applications requiring resistance against chemical exposure and high mechanical stresses. Even stainless steel of quality 1.4404 is not resistant to all chemical stresses, and may be affected by hydrochloric and hydrofluoric acid or certain chloride and brine concentrations, which may occur in cleaning agents or in swimming pools. Special anticipated stresses should therefore be verified in advance.

The TS finish (textured coated stainless steel V4A) features surfaces with a natural appearance. The stainless steel is suitably pre-treated and then powder coated with a polyurethane covering. The colour-stable coating is UV and weather-resistant. Visible edges should be protected against abrasion.

Installation

Schlüter®-SHOWERPROFILE-S

1. Cut the support profile to the required length and press its trapezoid-perforated anchoring leg firmly into the previously applied adhesive and align it.
2. Measure the required length and height of the triangular profile (front: low side, back: high side). Keep the insertion depth into the U-shaped groove in mind.
3. Cut the triangular profile to the required length to fit the proper height.

Note: Shorten the narrow and/or wide profile side to produce the proper height from the extra long profile. When working with profiles with an EB finish, remove the protective foil prior to installation. Apply tile adhesive to the fleece-laminated reverse side of the profile. Then insert it firmly into the U-shaped support profile and align it flush with the floor or wall.

Schlüter®-SHOWERPROFILE-R

1. Determine the length and height of the exposed wall area to be covered and cut the profile to the required length. When working with profiles with an EB finish, remove the protective foil prior to installation.
2. Connect SHOWERPROFILE-R to achieve the desired height.
3. Apply tile adhesive to the fleece-laminated reverse side of the profile. Then position the profile flush with the tile covering.

Notes

SHOWERPROFILE-S / -R requires no special maintenance or care. The profile can be cleaned along with the covering, using suitable detergents. The visible surfaces of the profiles can be polished with commercial chrome-polishing products. Stainless steel surfaces exposed to the environment or aggressive substances should be cleaned periodically using a mild household cleaner. Regular cleaning not only maintains the neat appearance of stainless steel, but also reduces the risk of corrosion.

All cleaning agents must be free of hydrochloric and hydrofluoric acid. Avoid contact with other metals, such as regular steel, to prevent corrosion. This also includes installation tools such as trowels or steel wool, e.g. for the removal of mortar residue. Do not use abrasive cleaning agents on the sensitive surfaces. We recommend the use of the stainless steel cleaning polish Schlüter-CLEAN-CP.



Product overview:

Schlüter®-SHOWERPROFILE-SA / -SB

EB = brushed stainless steel V4A

TS = textured coated stainless steel V4A

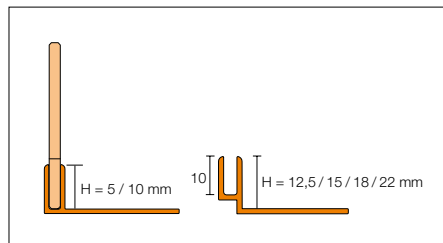
Length supplied: 1.2 m, 1.6 m and 2.0 m

Triangular profile H1= mm	SA	SB
	6	10
EB	•	•
TSI	•	•
TSG	•	•
TSSG	•	•
TSDA	•	•
MGS	•	•
MBW	•	•
TSBG	•	•
TSC	•	•
TSOB	•	•

Support profile H = mm	SA	SB
5	•	
10		•
12.5		•

Note:

Triangular profile 120 cm: H2 = SA: 30 mm / SB = 34 mm
 Triangular profile 160 cm: H2 = SA: 38 mm / SB = 42 mm
 Triangular profile 200 cm: H2 = SA: 46 mm / SB = 50 mm
 Support profiles from the Schlüter®-DILEX-RF product range in heights of 15, 18 and 22 mm are available on request.



Schlüter®-SHOWERPROFILE-S

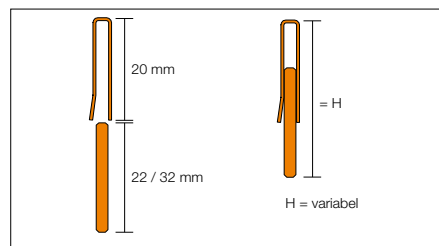
Schlüter®-SHOWERPROFILE-R

EB = brushed stainless steel V4A

TS = textured coated stainless steel V4A

Lengths supplied: 1 m and 1.4 m

H = mm	23 – 35	33 – 45
EB	•	•
TSI	•	•
TSG	•	•
TSSG	•	•
TSDA	•	•
MGS	•	•
MBW	•	•
TSBG	•	•
TSC	•	•
TSOB	•	•



Schlüter®-SHOWERPROFILE-R

Colours:

TSI = textured natural ivory

TSG = textured natural grey

TSSG = textured natural stone grey

TSDA = textured, natural dark anthracite

MGS = matte graphite black

MBW = matte brilliant white

TSBG = textured natural beige grey

TSC = textured natural cream

TSOB = textured natural bronze

Text template for tenders:

_____ units Schlüter-SHOWERPROFILE-S as a two-piece triangular profile made of stainless steel V4A with a brushed finish or high-quality powder coating, with a fleece fabric laminated on the reverse side and including a plastic support profile with a U-shaped insertion groove, to be supplied and professionally installed as part of the tile installation. The installation instructions of the manufacturer must be observed.

Profile type:

■ SHOWERPROFILE-SA

■ SHOWERPROFILE-SB

Material:

■ EB = brushed stainless steel V4A

■ TS = textured coated stainless steel V4A

Profile length:

■ 1.2 m ■ 1.6 m ■ 2.0 m

Art.-No.: _____

Material: _____ / unit

Labour: _____ / unit

Total: _____ / unit

_____ units Schlüter-SHOWERPROFILE-R as a two-piece wall transition profile made of stainless steel V4A with brushed finish or high-quality powder coating, with a fleece fabric laminated on the reverse side, to be supplied and professionally installed as part of the tile installation. The installation instructions of the manufacturer must be observed.

Profile type:

■ SHOWERPROFILE-R (23 - 35 mm)

■ SHOWERPROFILE-R (33 - 45 mm)

Material:

■ EB = brushed stainless steel V4A

■ TS = textured coated stainless steel V4A

Profile length:

■ 1.0 m ■ 1.4 m

Art.-No.: _____

Material: _____ / unit

Labour: _____ / unit

Total: _____ / unit

