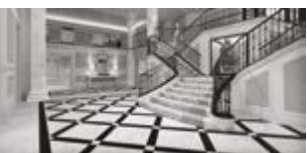




PROFILE OF INNOVATION



Hotel and Leisure

— REFERENCES —

Tranquillity...

...an ideal state of being,
easily achieved with the right project partner.

In choosing a supplier to support your tile and stone projects, a solid history of real-life references can make all the difference. As well as reinforcing confidence in a company's products and people, project references can offer an excellent source of inspiration, on both a technical and creative basis.

In this high-stakes arena, where a room closed is money lost, the importance of producing results that stand the test of time is paramount. With its solutions extensively specified into hotel and leisure projects, Schlüter-Systems can offer a steady and supportive hand in achieving your vision and making it last.

Hotel and Leisure Highlights

In choosing Schlüter-Systems, you'll reap the benefits of over 20 years' experience providing integrated system solutions for hotel and leisure projects.

Schlüter-Systems Ltd is proud to have been involved in a wide variety of projects for this prestigious sector. Here we present a hand-picked selection of some key highlights.



Case Study

Project: *Lalit Hotel, London*

Description: This conversion project took the historic Grade II listed building previously known as St Olave's Grammar School, located at Bankside in London, and transformed it into a luxury 70-room boutique hotel that fuses the best of Indian and British culture. Lalit London is the 13th hotel of the Lalit Suri Hospitality Group, and the first based outside of India. The project was a finalist in the 'Listed Building (Over £5 million)' category of the AJ Retrofit Awards 2017.

EPR Architects, leading on the project, elected to utilise Schlüter's complete wetroom system to provide secure waterproofing and appropriate drainage for each of the floor-level showers in the en-suite wetrooms. In each of its wetrooms, Lalit London features Schlüter-Systems' integrated CE Marked wetroom solution, including Schlüter®-KERDI-LINE drainage system, along with Schlüter®-DITRA-HEAT-E underfloor heating and Schlüter®-JOLLY/-QUADEC wall profiles.

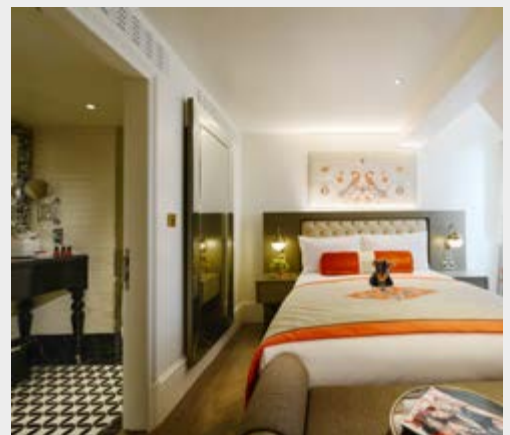
Application: Underfloor Heating, Wetrooms and Wall Profiles

Specified: Schlüter®-DITRA-HEAT-E, Schlüter®-JOLLY, Schlüter®-KERDI-BOARD, Schlüter®-KERDI-LINE, Schlüter®-KERDI-SHOWER, Schlüter®-QUADEC

Insight: Waterproofing is an essential provision for any building that incorporates areas subjected to high levels of moisture; many of the materials available to back tiles are merely water-resistant and therefore require additional finishing processes to prevent the ingress of moisture. In order to protect both the tile covering and the fabric of the impressive 19th century building, the walls of the Lalit London wetrooms incorporate the ready-to-tile waterproof foam-cored substrate Schlüter®-KERDI-BOARD, providing even and secure coverage. Schlüter®-JOLLY and -QUADEC, in a polished chrome anodised aluminium finish, provide use-appropriate, aesthetically pleasing protection for the small ceramic tiles that were then applied to the walls of Lalit London's wetrooms.

Schlüter®-KERDI-LINE is a component linear drainage system for the construction of floor-level showers with ceramic tiles and natural stone. It consists of a formed stainless steel channel body with a grate and frame structure that can be seamlessly adjusted to the thickness of the covering, from 3 to 25 mm. Both horizontal and vertical drain variants were used in the Lalit London project, complemented by the designer frameless channel cover, Schlüter®-KERDI-LINE-D, which allowed for the subtle blending of drainage provision with the patterned unglazed vitrified tile used for the wetroom floors.

Schlüter®-DITRA-HEAT-E incorporates uncoupling and electric underfloor heating into one solution, which is fully compatible with Schlüter's wetroom systems and keeps assembly heights to a minimum. This last factor is particularly useful in the case of renovation projects, in which build-up often has to be minimised to ensure flow from room to room.



©Morley von Sternberg and ©The Lalit Suri Hospitality Group



Project Summary

Project: *Adare Manor, Limerick*

Description: Set in 840 acres of grounds, the exquisite five-star Adare Manor was the subject of an 18-month-long renovation – its most extensive in 25 years.

Specialist technical knowledge and a number of key product solutions were used to minimise floor build-up and guarantee complete waterproofing provision in the refurbishment.

Application: Underfloor Heating, Acoustic Reduction, Uncoupling and Waterproofing

Specified: Schlüter®-DITRA-HEAT-E, Schlüter®-DITRA-SOUND, Schlüter®-DITRA 25 and Schlüter®-KERDI-200

Insight: Within the bedrooms and bathrooms of Adare Manor, Schlüter-Systems put forward a single-source solution that reduced floor build-up from ten layers to six and saved 19mm of height, as well as eliminating the need for smoothing compound.

As regards acoustic reduction, Schlüter assisted by exchanging the proposed matting of 10mm for Schlüter®-DITRA-SOUND matting of only 3.5mm thickness, saving 65% of build-up for acoustic reduction measures. This matting offered the same dB rating and could be installed using a standard polymer modified adhesive.

A complete waterproofing system for the walls of the bathrooms and golf clubhouse was provided, consisting of Schlüter®-KERDI-200 waterproofing membrane, Schlüter®-KERDI-KEBA sealing band and Schlüter®-KERDI-COLL-L adhesive. Schlüter's original uncoupling membrane, Schlüter®-DITRA 25, was provided for use under the flooring of Adare Manor's new ballroom and golf clubhouse and spa.



©Adare Manor

Project: *Fairmont St. Andrews, St Andrews*

Description: The 211 bed five-star Fairmont St. Andrews, part of the illustrious global group of Fairmont hotels and resorts, underwent an 18-month-long refurbishment beginning in January 2016. The works' programme for this cliff-top venue included upgrades to public areas as well as guestrooms.

Schlüter-Systems was engaged to provide a full wetroom specification for the ensuites that were being refurbished, to ensure appropriate drainage and complete waterproofing.

Application: Wetrooms

Specified: Schlüter®-KERDI-200, Schlüter®-KERDI-LINE, Schlüter®-KERDI-SHOWER

Insight: Following the creation of a sample room, the specification was then rolled out across all of the wetrooms in the refurbishment programme. The design of the shower called for bespoke shaping of the shower tray, which was easily achieved with the various sloped shower trays of the Schlüter®-KERDI-SHOWER range, as they are easily cut to shape.

Component linear drainage system, Schlüter®-KERDI-LINE, was chosen for the refurbishment project, with Schlüter®-KERDI-LINE-C tile pan grates allowing a subtle balance of material finishes. Polyethylene waterproofing membrane, Schlüter®-KERDI-200, along with sealing components Schlüter®-KERDI-KEBA and Schlüter®-KERDI-COLL-L were employed as the waterproofing system, to provide complete protection against the ingress of moisture.



©Fairmont Hotels & Resorts and ©RPW Design (shot by Sim Canetty-Clarke)

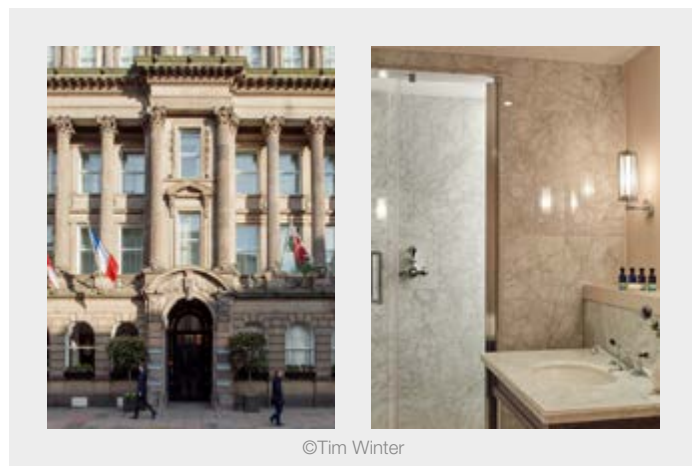
Project Overviews

Project: *The Principal (George Street), Edinburgh*

Description: Formed of five listed Georgian townhouses, dating back to 1775, the Principal Edinburgh on George Street, underwent a luxurious multi-million pound restoration that included the installation of 40 new wetrooms. Schlüter-Systems provided a full wetroom spec for the project.

Application: Wetrooms

Specified: Schlüter®-DITRA 25, Schlüter®-KERDI-200, Schlüter®-KERDI-BOARD, Schlüter®-KERDI-LINE, Schlüter®-KERDI-SHOWER, Schlüter®-SCHIENE



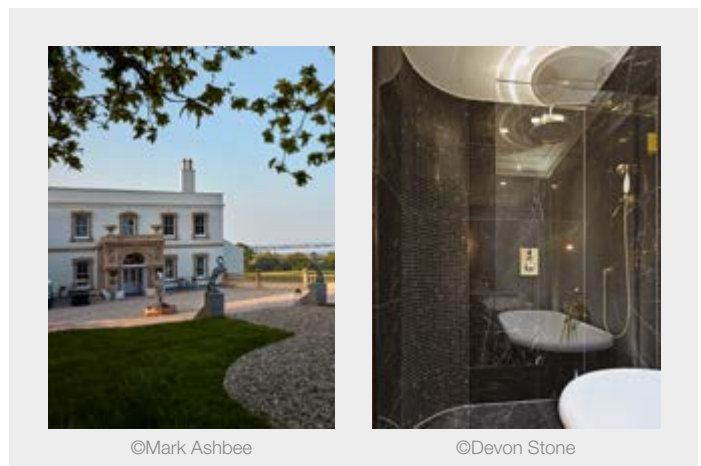
©Tim Winter

Project: *Lympstone Manor, Exmouth*

Description: The fulfilment of renowned chef Michael Caines' dream, this project took a Grade II listed Georgian manor house and converted it into a striking contemporary country house hotel with 21 guestrooms. Two thicknesses of multi-functional substrate Schlüter®-KERDI-BOARD were used in the bathrooms to waterproof, as well as aid in the levelling and smoothing of surfaces.

Application: Waterproofing

Specified: Schlüter®-KERDI-BOARD



©Mark Ashbee

©Devon Stone

Project: *The Lanesborough Hotel, London*

Description: One of London's most exclusive and luxurious hotels has used Schlüter-Systems' products as part of its grand refurbishment. The Lanesborough Hotel, in Hyde Park Corner, has had extensive renovations carried out by the late, world-renowned interior designer, Alberto Pinto.

Application: Tile Substrate and Underfloor Heating

Specified: Schlüter®-KERDI-BOARD and Schlüter®-DITRA-HEAT-E

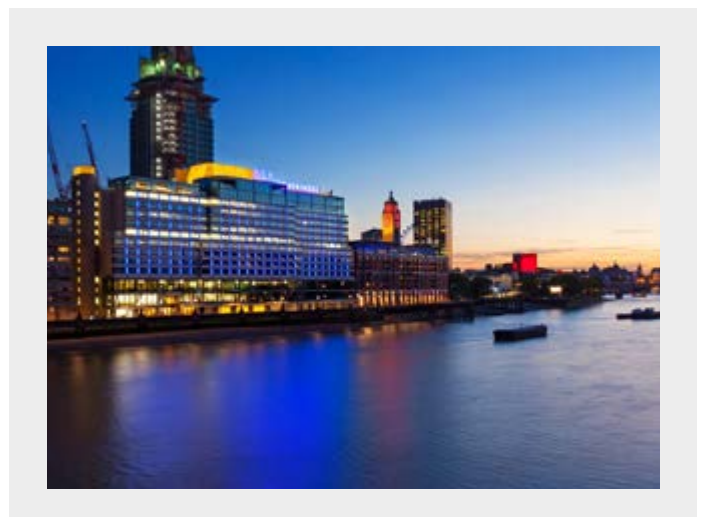


Project: *Sea Containers House, London*

Description: Originally completed to become office space, Sea Containers House has been transformed to become the Mondrian Hotel London. Schlüter-Systems' products were specified throughout the 360 guest rooms and shower rooms.

Application: Profiles, Uncoupling and Wetrooms

Specified: Schlüter®-KERDI, Schlüter®-KERDI-LINE, Schlüter®-DITRA 25, Schlüter®-QUADEC and Schlüter®-SCHIENE



Case Study

Project: *Watersports Centre, Llandegfedd*

Description: Llandegfedd Visitor and Watersports Centre in Pontypool, South Wales, was crowned RSAW (Royal Society of Architects in Wales) Building of the Year in the 'RIBA Regional Awards 2016 – Wales'.

The Visitor and Watersports Centre opened in 2015 as a £2.5 million facility to complement the Llandegfedd water supply reservoir owned by Dwr Cymru Welsh Water. It hosts activities such as sailing, fishing, windsurfing, power-boating, canoeing and kayaking; there are also four walking trails around the reservoir.

Schlüter-Systems was consulted on the project specification, along with contractor, Anthony A Davies Group. Numerous Schlüter product solutions were eventually used across the project, to support both interior and exterior areas of tiling.

Application: Tile Substrate, Movement Joints, Balconies and Terraces

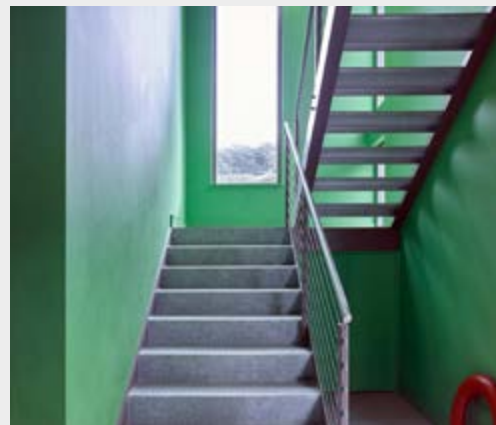
Specified: Schlüter®-BARA-RW, Schlüter®-DILEX, Schlüter®-DITRA-DRAIN, Schlüter®-JOLLY, Schlüter®-KERDI-BOARD, Schlüter®-QUADEC, Schlüter®-TROBA-PLUS

Insight: Wall substrates for the project were prepared with Schlüter®-KERDI-BOARD tile and stone backerboard. This solution, chosen for the project due to its waterproofing qualities, was installed throughout the ground and first floor on all surfaces that were to be tiled, and joints were sealed using Schlüter®-KERDI-KEBA and Schlüter®-KERDI-COLL. Purpose-designed wall profiles, Schlüter®-JOLLY, in colour coated aluminium, and Schlüter®-QUADEC, in brushed stainless steel, were used to protect and finish the expanses of wall tiling within the centre.

Given Llandegfedd Reservoir's designation as a Site of Specific Interest and its celebration of all things nature, Schlüter®-KERDI-BOARD – being eco-friendly due to its lack of cement and fibreglass – was a fitting choice of backerboard. The product is also waterproof, temperature-resistant, vapour retardant, thermally insulating, quick to install and lightweight.

The contractor singled out Schlüter®-KERDI-BOARD for praise in particular, due to its ease of use and positive contribution to the overall aesthetics of the finished installation. Schlüter's Technical Team also received positive feedback for their support of the contractor throughout the project.

Schlüter's balcony and terrace solutions – the specialist finishing profile, Schlüter®-BARA-RW (in light beige); passive capillary drainage system for exterior areas, Schlüter®-DITRA-DRAIN; and impact-resistant sub-surface drainage system, Schlüter®-TROBA-PLUS – were also specified for the project. Together these products ensured effective handling of moisture on the balcony of the building, which overlooks a beautiful scenery of reservoir and rolling hills.





Project Summary: Leisure

Project: *Places Leisure Centre, Eastleigh*

Description: This £25 million leisure centre, with state-of-the-art facilities, is the flagship of Eastleigh Borough Council's HealthWorks programme. Built to replace the former Fleming Park facility in Eastleigh, Hampshire, it boasts an eight-lane, 25-metre swimming pool, a fitness suite, several multi-purpose studios and squash courts, a soft play area, café and kitchen, amongst numerous other provisions.

Application: Movement Joints and Profiles

Specified: Schlüter®-DILEX, Schlüter®-QUADEC

Insight: Places Leisure Centre was constructed over an 18-month period, and opened to the public in November 2017. Specified into the project by AHR Architects, Schlüter-Systems provided connection and intermediate movement joint profiles, as well as wall finishing profiles for external corners. V4A stainless steel was the material of choice for the majority of profiles provided, perfectly suited to their situation in the pool surround and changing rooms, and therefore extensive exposure to cleaning chemicals. The wall-to-floor connection joint, Schlüter®-DILEX-HKU, along with associated external corner pieces, can be found managing movement in the pool surround and also within the changing areas, where the cube-faceted wall finishing profile, Schlüter®-QUADEC, has also been employed. Aluminium intermediate joint profile, Schlüter®-DILEX-AKWS, in 11mm width with black insert, was installed within the expansive lobby of the project.



©Chris Balcombe

Project Overviews

Project: *Wimbledon, London*

Description: The hospitality suites at Wimbledon, surrounding the 11,429 capacity court at the All England Lawn Tennis Club – which plays host to the world's best tennis players during the two week Grand Slam tournament – now feature the famous orange Schlüter®-DITRA 25 uncoupling membrane underneath. Other Schlüter products also installed were Schlüter®-DILEX movement and control joints and Schlüter®-TREP stair-nosing profiles for safe, slip-resistant stair edges.

Application: Profiles and Uncoupling

Specified: Schlüter®-TREP, Schlüter®-DILEX, and Schlüter®-DITRA 25

Project: *Edgbaston Stadium, Birmingham*

Description: Edgbaston Cricket Stadium has seen products from the Schlüter®-SCHIENE and Schlüter®-RENO range of finishing threshold profiles – along with movement joints from the Schlüter®-DILEX series – installed around the stadium entrance, toilets and players' changing rooms. This offers the perfect protection, ensuring England players and fans will be able to celebrate victories against the West Indies, Australia and South Africa without worrying that the tiling beneath their feet will disappoint.

Application: Profiles

Specified: Schlüter®-SCHIENE, Schlüter®-RENO and Schlüter®-DILEX



Other Literature to Support Your Journey

This is just one of the brochures available from our suite of literature crafted specially for the architect and specifier; other items available include a product summary and an overview of the service and support we can provide. We've worked diligently to ensure that you have access to concise information that will help you in your specification journey.

Applications

This brochure includes information on our portfolio of integrated product solutions, including those for:

- ✓ Wetrooms
- ✓ Substrates
- ✓ Underfloor Heating
- ✓ Profiles
- ✓ External Applications

Our Service

Focusing on our personnel and the resources available to you, this brochure includes information on:

- ✓ Our Teams
- ✓ BIM and NBS Clauses
- ✓ Our suite of RIBA Approved CPDs
- ✓ Schlüter® Approved Installer Network

For more information and to request additional items, please email architect@schluter.co.uk or call 01530 813396.



PROFILE OF INNOVATION

Schlüter-Systems Ltd · Units 3-5 Bardon 22 Industrial Estate · Beveridge Lane · Coalville · Leicestershire · LE67 1TE
Tel.: +44 1530 813396 · Fax: +44 1530 813376 · architect@schluter.co.uk · www.schluter.co.uk