

## Further information

Price list | Brochures | Homepage | YouTube



[schluter.co.uk](http://schluter.co.uk)



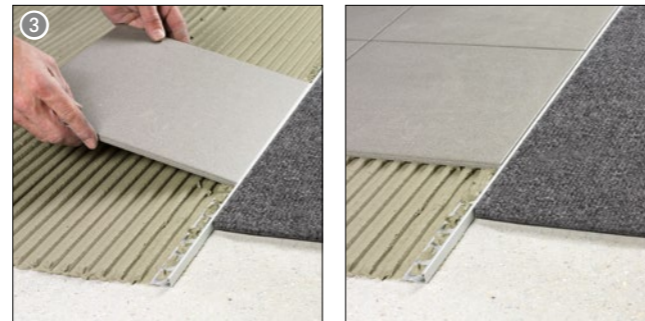
**Schlüter-Systems KG** · Schmölestraße 7 · D-58640 Iserlohn  
Tel.: +49 2371 971-1261 · Fax: +49 2371 971-1112 · [schluter-systems.com](http://schluter-systems.com)

**Schlüter-Systems Ltd** · Units 3-6 Bardon 22 Industrial Estate  
Bardon Hill · Coalville · Leicestershire · LE67 1TE  
Tel.: +44 1530 813396 · Fax: +44 1530 813376  
[sales@schluter.co.uk](mailto:sales@schluter.co.uk) · [schluter.co.uk](http://schluter.co.uk)

Art.-No. 553 037 – edition 05/23

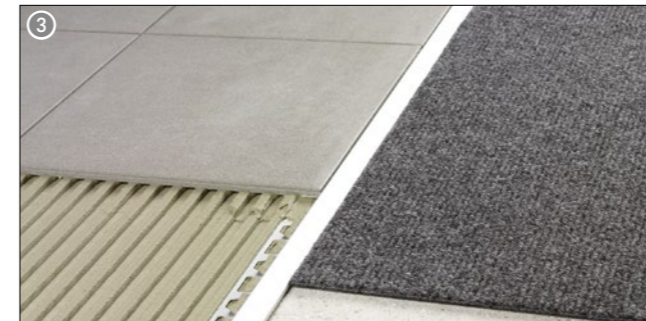
## Perfect edge protection in a few steps

1. Apply tile adhesive with a notched trowel, press the perforated anchoring leg of the selected Schlüter-SCHIENE into the adhesive and align.
2. Trowel additional adhesive over the perforated anchoring leg to ensure full coverage.
3. Solidly embed and align the tiles so that the tiled surface is flush with the top of the profile; (profile should not be higher than the tiled surface). Fully embed the tiles in the area of the profile. Completely fill the space between the tiles and the profile with grout.



## Seamless covering transition in a few steps

1. Apply tile adhesive to the area where profile is to be installed, using a notched trowel.
2. Fill the cavity on the underside of the selected Schlüter-RENO-U profile with tile adhesive. Trowel additional adhesive over the perforated anchoring leg to ensure full coverage.
3. Solidly embed and align the tiles so that the tiled surface is flush with the top of the profile. Fully embed the tiles in the area of the profile. Completely fill the space between the tiles and the profile with grout.



## Edge protection profiles for floors

### Schlüter-floor profiles





## Neat separation of coverings

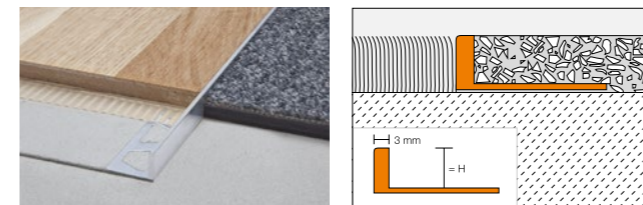
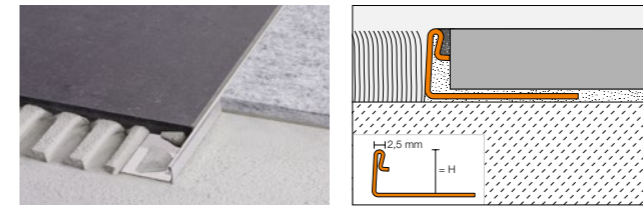
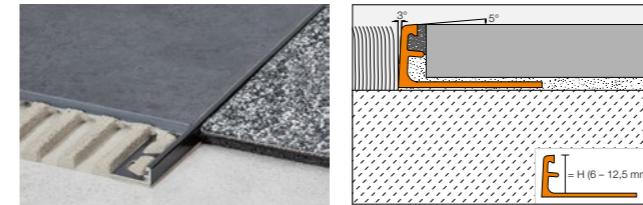
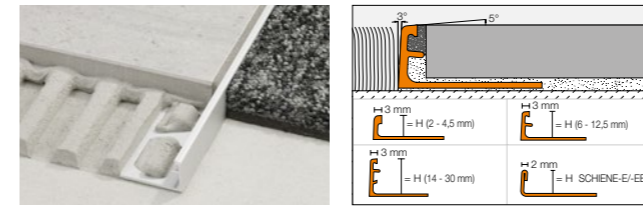
Finishing profiles such as the original Schlüter-SCHIENE finish tiled surfaces and protect the external edges of ceramic tile and natural stone coverings from mechanical impact. The profiles of the Schlüter-RENO range create a seamless transition between adjoining floor coverings. All our finishing profiles for floor areas contribute to the lasting aesthetic appeal of floor coverings.

## Seamless safety and quality

Schlüter-SCHIENE, -RENO-V and -RENO-RAMP are transition and finishing profiles that are especially helpful, particularly in terms of accessible building design. They create stepless transitions between floor coverings of different heights, for instance in the threshold area between different rooms, in floor-level showers or at transitions from tiles to carpeting. This effectively eliminates barriers or trip edges. In addition, the edges of the adjacent floor coverings are effectively protected by the transition leg. The joint spacer creates a joint chamber with the tile. The profiles are available in various materials and finish options, such as brushed stainless steel.



## Schlüter®-SCHIENE Product details



## Schlüter®-RENO Product details

