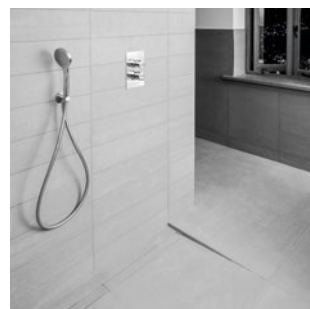
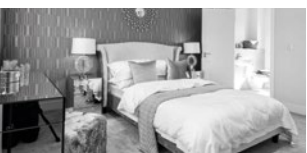
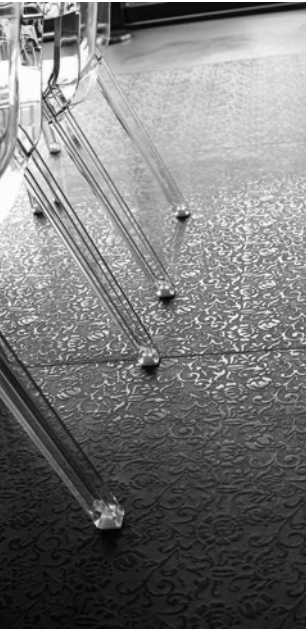


Residential

— REFERENCES —



PROFILE OF INNOVATION

Comfort...

...the security to realise the
most personal of projects

Those who choose to create their own home or stake their interest in the latest high-profile development are looking for a long-term investment that will become entwined in their existence. As such, the solution reached must achieve the perfect balance of personality and practicality.

The selection of materials that satisfies individual tastes is one concern, but no matter the choice of tile and stone, Schlüter can assist.

Residential Highlights

From eco-friendly rural dream houses to exclusive luxury urban developments, Schlüter-Systems has played a part in creating hundreds of homes.

The variety of products we carry means that we can protect and enhance tile and stone throughout a property – in wetrooms, kitchens and living areas, as well as in exterior features such as balconies and terraces. In the following pages, we give you a taste of some of the projects we've been involved with.



Case Study

Project: Residential, Surrey

Description: A complete Schlüter®-WETROOM system, along with a number of other Schlüter products, helped in the creation of a sophisticated wetroom at a luxury home in Esher, Surrey.

The owner was embarking upon a renovation and extension of his existing home. This included a refurbishment of the residence's 4.8m x 2.7m master en-suite.

Enlisting the services of Quell Bathrooms, the client set out the fundamentals of what he wanted – bath, shower and double basin with storage. He then gave free reign to Managing Director of Quell, Vincent Pope, to come up with a few ideas from which the final design was selected.

The resulting wetroom utilised a number of different products from Schlüter-Systems, in order to ensure a sound finish for the client's considerable investment.

Application: Profiles, Underfloor Heating, Wetrooms

Specified: Schlüter®-DITRA-HEAT-E, Schlüter®-JOLLY, Schlüter®-KERDI-BOARD, Schlüter®-KERDI-LINE-WRKL, Schlüter®-QUADEC

Insight: Integrated linear drain wetroom kit, Schlüter®-KERDI-LINE-WRKL, was used to provide guaranteed waterproofing and drainage for the bathroom. This kit consists of a waterproofing and sealing kit, shower boards, drainage channel and support plus a tile support grate.

The waterproofing and sealing kit contains Schlüter®-KERDI waterproofing membrane, plus Schlüter®-KERDI-KEBA sealing band, Schlüter®-KERDI-KERECK pre-formed corner pieces and Schlüter®-KERDI-COLL sealing adhesive. The KERDI membrane from the kit was used to waterproof the back wall and around the shower wall. The rest of the room was done out with Schlüter®-KERDI-BOARD waterproof backerboard in 10mm thickness. All joints and junctions were sealed with the aforementioned set of sealing products.

The 800mm linear drainage channel was installed in an intermediate location, sloped to from both sides using the Schlüter®-KERDI-SHOWER-L and Schlüter®-KERDI-SHOWER-LS pre-sloped shower boards. The drain is designed to be tiled to in-line with the rest of the floor - in this case with wood-effect tiles - resulting in a discreet solution.

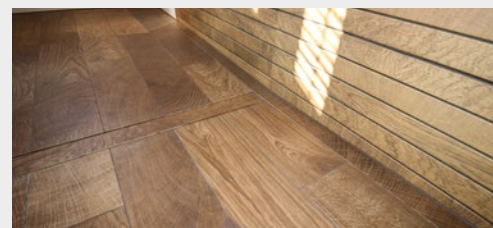
'Since we started using Schlüter's wetroom kits three years' ago, we've had none of the problems we would get previously', says Vincent, "We wouldn't deviate from them now as they offer a comprehensive and trustworthy solution to prepping a wetroom".

The timber floors of the project had already been insulated, so Vincent installed the original Schlüter®-DITRA-HEAT-E electric underfloor heating system. "It's great that you can use this system throughout the whole of a room, including the shower area", says Vincent, "Often this isn't an option with other systems".

Continues Vincent, "In refurbishment work, it's always a struggle to keep floor build-ups low – but with the Schlüter®-DITRA-HEAT-E system, all build-up is contained within the height of the membrane so there are no unexpected surprises".

Vincent used chrome-plated brass finishing profile, Schlüter®-QUADEC-MC, to provide finishing against the wood-effect wall tiles. He also used the matching Schlüter®-QUADEC-MC/EV corner pieces to finish the corners of the 1-metre-high shower wall. "Schlüter trims give a great finish for tile edges and neatly cover the edge of tile", comments Vincent, "Plus the corner pieces give a good looking finish that avoids sharp edges – important as we were finishing a low wall that could be a source of injury if finished with mitring".

Schlüter®-JOLLY-AC in a Matte Brilliant White (MBW) finish was used to finish edges in wall areas where 1000mm x 330mm white ceramic tiles were installed, including around window reveals and product boxing. Three quarters of the edges of Quell's custom-built niches for the project were also edged with the MBW trims, with QUADEC-MC to the inside edge of each as part of a wood-effect feature shower wall.





Case Study

Project: *Landmark Place, London*

Description: Schlüter-Systems provided a variety of trims and movement joints to ensure a damage-free finish for the tiled walls and floors of high-end residential project, Landmark Place.

The 280,193sq ft Barratt Homes development has an enviable position on the north bank of the River Thames, near the iconic Tower Bridge, and boasts 165 one-bed suites, one, two and three bed apartments and penthouses across 10 storeys. It replaces Sugar Quay, a 1970s office building built for Tate and Lyle, which was purchased by CPC Group back in 2012.

The project was a Foster + Partners scheme delivered by Broadway Malyan. A six-year process has resulted in stunning surroundings for those who are lucky enough to have secured a residence, and Schlüter-Systems' products provide subtle and stylish support throughout various formats of matte and polished porcelain (297 x 297mm, 597 x 597mm, 1197 x 1197mm) and 600 x 600mm marble.

Application: Movement Joints, Profiles, Uncoupling

Specified: Schlüter®-DILEX-BWB, Schlüter®-DILEX-BWS, Schlüter®-DITRA 25, Schlüter®-JOLLY-MC, Schlüter®-RENO-T, Schlüter®-SCHIENE, Schlüter®-TREP-G

Insight: Schlüter provided 7550m² of its uncoupling membrane Schlüter®-DITRA 25, in addition to over 400 metres' combined length of the 10mm-wide PVC movement joint Schlüter®-DILEX-BWB and the 5mm-wide equivalent Schlüter®-DILEX-BWS, both in brilliant white. The combination of these two products forms a complete system to guard an installation against damage from movement. Installed between the tile and the substrate to accommodate the differentials of movement in the tile and substrate, DITRA 25 has become a tile installation staple, having amassed decades of proven use across the world. DILEX-BWS and -BWB divide a tile covering into appropriately sized fields for the relief of tension and are available in a variety of popular tones, making them as inconspicuous as possible within an installation.

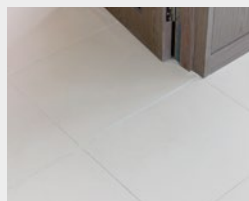
Transition profiles Schlüter®-SCHIENE and Schlüter®-RENO-T in brushed stainless steel were used to neatly handle changes in the covering material. SCHIENE was used for finishing in areas where tile abutted carpet and the T-shaped RENO-T provided a neat bridge between adjacent tiled areas.

Wall profile Schlüter®-JOLLY-MC was used on the niches and external wall corners within all the porcelain bathrooms of the project. Consisting of brass with a plating of chrome, this stand-out finishing trim combines premium durability with a particularly high-shine finish.

Schlüter®-TREP-G, a brushed stainless steel stair nosing with an adhered non-slip insert, was used to finish and enhance the safety of the marble-effect porcelain tiled stair core. The white insert selected not only provides slip resistance, but also creates a good contrast with the dark porcelain tile for enhanced user friendliness.

"We find that Schlüter offers a great range of profile depths, so you can always find the right sized trim for job", says Joshua Gallagher, Project Manager at Marmi Limited, "This was of huge benefit at Landmark Place, as there were so many different expanses of tile and material transitions to handle".

"Whenever we order Schlüter products, we always find them to be of the highest quality", continues Joshua, "Our teams enjoy installing them and never have any problems doing so".





Case Study

Project: *Scotts on the Rocks, Newcastle (N.I.)*

Description: The owner of a leading Northern Irish tile supplier was responsible for the creation of this unique ocean-facing property, built at the foot of the highest peak in the Mountains of Mourne. The home benefits from amazing views out to sea and is built on two levels. The main level houses a kitchen, dining room, living room, bathroom, bedroom and sheltered sea terrace; a second, downstairs level contains space for family and friends to stay and be entertained.

Schlüter-Systems' environmentally friendly wet underfloor heating system, Schlüter®-BEKOTEC-THERM, was installed throughout the property.

Application: Uncoupling, Underfloor Heating

Specified: Schlüter®-BEKOTEC-THERM, Schlüter®-DITRA 25

Insight: Having worked with the Schlüter®-BEKOTEC-THERM system in the course of his everyday job, David Scott, of David Scott Tiles in Belfast conducted the ultimate test to see if it lived up to its claims.

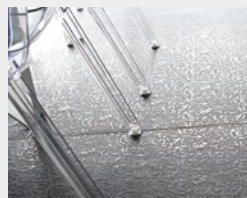
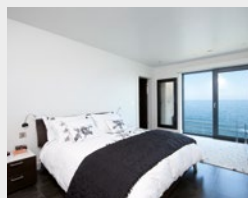
"I like to test products out myself by installing them in my own property as it then helps me to sell them with even more confidence", comments David, "Schlüter®-BEKOTEC-THERM is an excellent efficient product and it's very easy to install. The depth of screed is what sets this apart from other similar underfloor heating systems. It requires a 30% thinner screed which helps distribute heat much faster and therefore uses less energy.

"This happens because the thin patented structure of the ceramic thermal floor allows it to respond to temperature changes that much quicker thanks to the connected air channels within the Schlüter®-DITRA membrane", continues David, "That's why whenever we install Schlüter®-BEKOTEC-THERM at David Scott Tiles we insist that Schlüter®-DITRA matting is also installed, as we know this will ensure the very best results possible."

Ian Knifton, Head of Technical at Schlüter-Systems Ltd, comments, "The modular system that makes up Schlüter®-BEKOTEC-THERM stands out as being economical, effective and energy efficient, which makes it the ideal underfloor heating system to install. The fact that a leading industry expert has installed it in his own property, and a stylish dream home at that, speaks volumes about the product's quality and suitability for any location.

"Its low supply temperature of approximately 30°C, compared to the more conventional 50°C or the 70-90°C in some radiator systems, also means Schlüter®-BEKOTEC-THERM is extremely effective both with conventional heat generation methods and regenerative energy sources such as heat pumps or solar panels", adds Ian, "This makes it ideal for new-build properties and other 'grand designs' similar to Scotts on the Rocks."

From a construction perspective, Schlüter®-BEKOTEC-THERM is quick to install due to less material being used than in other systems. As well as its performance and ease of use, what makes Schlüter®-BEKOTEC-THERM really stand out is the five-year warranty that covers the whole floor assembly, therefore adding additional safety and benefits to this innovative system.





Project Summary

Project: *The Moonstone Project, Cheltenham*

Description: Winner of Home Building and Renovating's 2010 award for 'Britain's Best Eco-Home', this luxury house in the Cotswolds has multiple levels and boasts six bedrooms, an indoor swimming pool, cinema and games room. It also has a U value of 0.07, giving it a passivhaus rating. The revolutionary, award-winning underfloor heating system, Schlüter®-BEKOTEC-THERM, was the natural choice for one of the UK's greenest self-build projects.

Application: Uncoupling, Underfloor Heating

Specified: Schlüter®-BEKOTEC-THERM, Schlüter®-DITRA 25

Insight: Wet underfloor heating system, Schlüter®-BEKOTEC-THERM, was installed under all 1,470 square metres of flooring in this impressive property. Jerusalem Gold stone tiles were used internally throughout the whole house, as well as on three exterior balconies. To uncouple the Jerusalem Gold stone tiles from the Cemex Supaflo anhydrite screed, the Schlüter®-DITRA 25 uncoupling membrane was specified above the underfloor heating system.

Because 80% of the house's energy is generated from flat plate solar collectors, with the remainder being generated by a ground source heat pump, the thin screed layer (and the resulting lower temperatures needed to heat it) mean the heat pump works more efficiently than with conventional underfloor heating systems. And with 1,470 square metres of flooring to heat, owner John Croft said it was essential that the temperature was easy to regulate. There was an added bonus for the heating contractors, who found the entire system quick and simple to install.



Project: *Chigwell Grove, Essex*

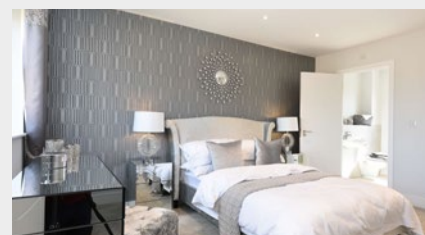
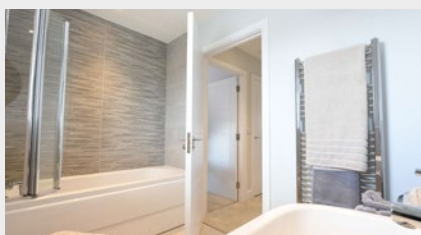
Description: An Essex-based project centring on the provision of a much-needed National Autistic Society (NAS) school saw the installation of electric underfloor heating system, Schlüter®-DITRA-HEAT-E-DUO, into the 60 houses built to off-set its costs. At the centre of the project was the idea to build the school without using public funds. As a result, a carefully considered gated community of three, four and five-bed luxury houses – Chigwell Grove – was planned to enable its construction. The Green Belt site on which the initiative has been realised included former training pitches for Premier League football team Tottenham Hotspur and was sensitively redeveloped, with the school as its focus.

Application: Underfloor Heating

Specified: Schlüter®-DITRA-HEAT-E-DUO

Insight: Schlüter®-DITRA-HEAT-E-DUO was installed across the bathrooms and ensuites of the houses in the Chigwell Grange development, beneath both 900 x 450mm and 600 x 600mm porcelain tiles. Three different sized kits were used according to the size of the rooms, minimising any waste product.

"We found the Schlüter®-DITRA-HEAT-E-DUO system very easy to install – much easier than mesh-based systems", says Paul Clough, Project Manager at PJ Ceramics, "In fact as a company we have recently switched completely to membrane-based systems – they're far more versatile as you can route the cable around features rather than heating entire floors at additional expense".



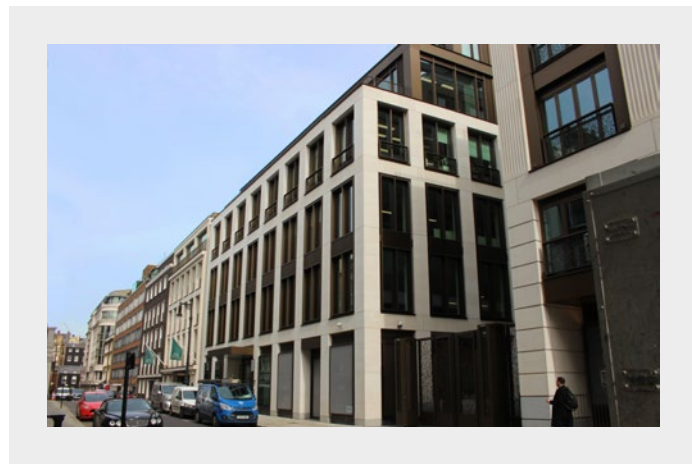
Project Overviews

Project: *Clarges, London*

Description: £228 million Mayfair mixed use development, with 34 'super-prime' apartments, capturing views of Green Park and Buckingham Palace. Schlüter-Systems provided a waterproofing system utilising both its standard and pre-grooved waterproof backerboards, as well as supplying uncoupling matting.

Application: Uncoupling, Wetrooms

Specified: Schlüter®-DITRA 25, Schlüter®-KERDI-BOARD, Schlüter®-KERDI-LINE

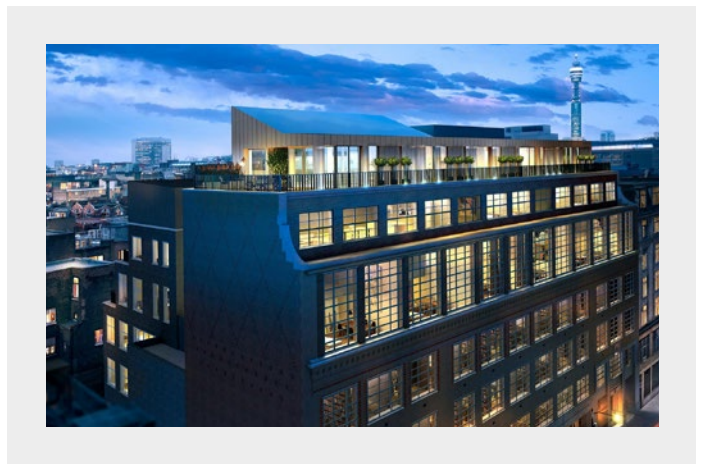


Project: *St. Martins Lofts, London*

Description: The designers of an exclusive collection of apartments in Soho, situated in an iconic former university building, selected underfloor heating and uncoupling systems from Schlüter-Systems as part of superior quality interiors for its residents. The uncoupling system was also specified in the roof terraces of the project to handle drainage and protect the assembly.

Application: Uncoupling, Underfloor Heating

Specified: Schlüter®-DITRA-DRAIN and Schlüter®-BEKOTEC-THERM

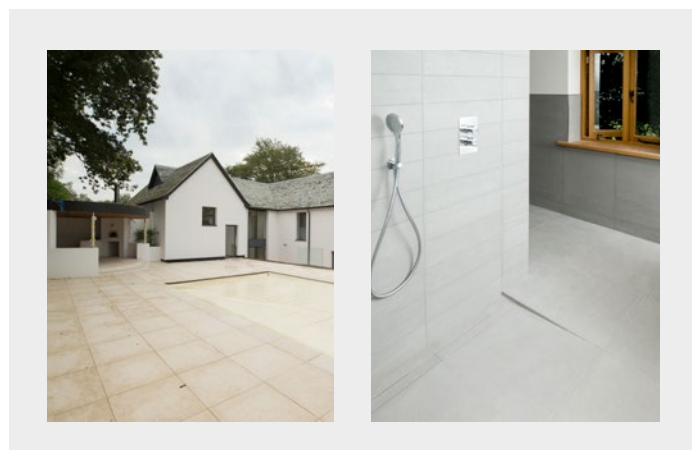


Project: *Chitterman House, Markfield*

Description: In this self-build project, Leicestershire contractor Pearson Properties was able to seamlessly combine the history of a 19th century building with cutting edge environmental benefits, using products from Schlüter-Systems.

Application: Balconies and Terraces, Movement Joints, Profiles, Underfloor Heating and Wetrooms

Specified: Schlüter®-BEKOTEC-THERM, Schlüter®-DILEX, Schlüter®-DITRA-DRAIN, Schlüter®-QUADEC, Schlüter®-SCHIENE, Schlüter®-KERDI-DRAIN, Schlüter®-KERDI-BOARD, Schlüter®-KERDI-LINE, Schlüter®-KERDI-SHOWER,

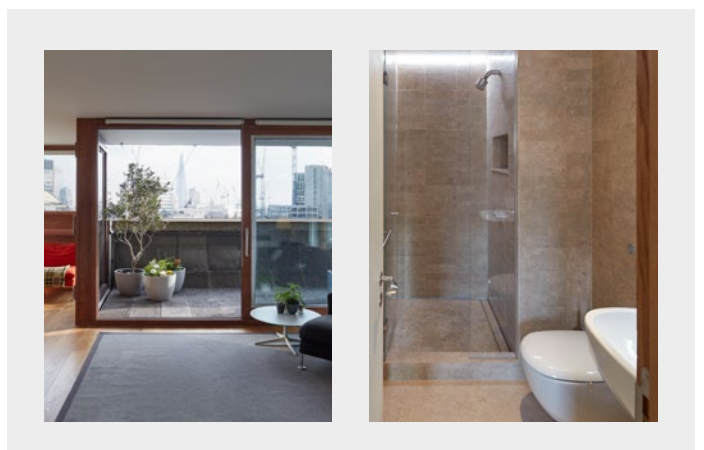


Project: *Barbican Tower Apartment, London*

Description: Renovation of an eleventh floor four-bedroom Barbican tower apartment. Quinn Architects' interior project was a personal study of living on the estate, with every detail being designed, prototyped and manufactured in a Camberwell workshop rented by the practice. Schlüter's linear drainage system was specially selected due to its ease of installation and subtle finish.

Application: Wetrooms

Specified: Schlüter®-KERDI-LINE





PROFILE OF INNOVATION

Schlüter-Systems Ltd · Units 3-5 Bardon 22 Industrial Estate · Beveridge Lane · Coalville · Leicestershire · LE67 1TE
Tel.: +44 1530 813396 · Fax: +44 1530 813376 · architect@schluter.co.uk · www.schluter.co.uk