

Innovations for floor level showers



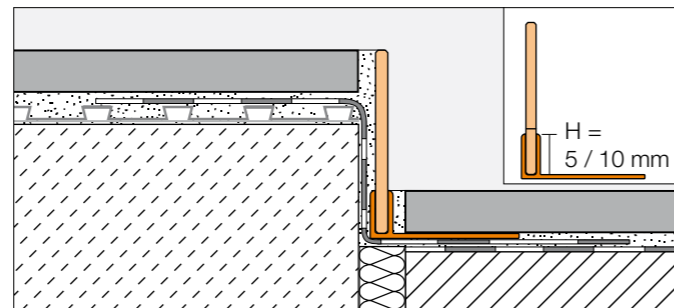
Schlüter-Systems provides you with ...

... easily installed detail solutions for barrier-free, floor-level showers, featuring an innovative sloped profile, a wall connection profile made of brushed stainless steel and Schlüter®-DILEX and -RENO profiles for the professional design of the shower access area.

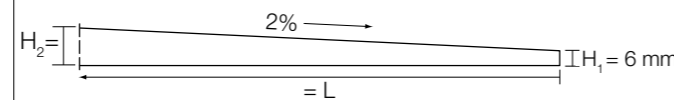
1 Schlüter®-SHOWERPROFILE-S Triangular profile for sloped edges



Schlüter®-SHOWERPROFILE-S is a sloped triangular flat profile made of brushed stainless steel flat profile with 2% slope for covering the exposed edges of floor level showers. A fleece fabric is laminated on the reverse of the profile for bonding with the tile adhesive. A matching hard PVC support profile that is available in different heights and features a U shaped installation channel is used for floor side attachment. The triangular profile can be shortened as necessary on the short and/or long side for correct height adjustment. The triangular profile can be used on the left or right side of the floor transition or below the tiles of a lateral wall.



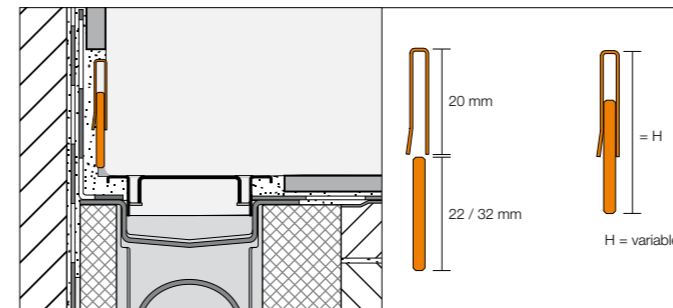
120 cm triangular profile: $H_2 = 30$ mm
160 cm triangular profile: $H_2 = 38$ mm



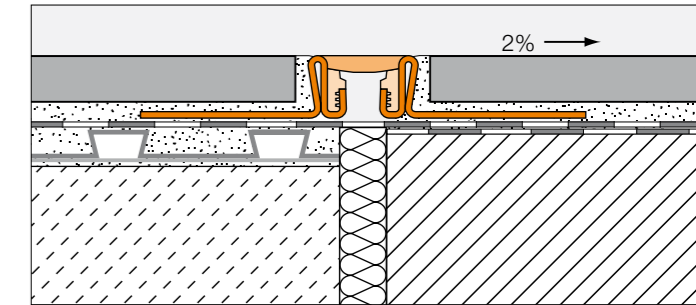
2 Schlüter®-SHOWERPROFILE-R Wall connection profile



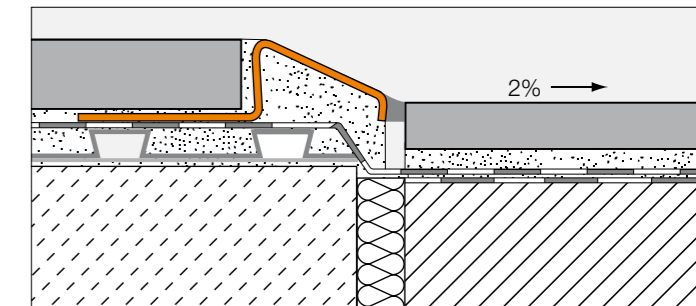
Schlüter®-SHOWERPROFILE-R is a two piece wall transition profile for covering the exposed wall area where the floor slopes down to a perimeter linear drainage channel. The visible surface of the profile consists of brushed stainless steel. A fleece fabric is laminated on the reverse side of the profile for bonding with the tile adhesive. The two piece design, Schlüter®-SHOWERPROFILE-R can be seamlessly adjusted to any height between 23 and 45 mm (available in two lengths).



3 Schlüter®-PROFILES for the shower access area



Installation variant A:
Floor level transition with
Schlüter®-DILEX movement
joint profile



Installation variant B:
Splash guard with
Schlüter®-RENO-U



Material and shopping checklist

You will need the following materials for installing the sloped profile and the wall connection profile:

- Schlüter®-SHOWERPROFILE-S sloped shower profile
- Schlüter®-SHOWERPROFILE-R wall transition profile
- Dry-set mortar (tile adhesive)
- Grout

Further system products for barrier-free showers:

- Schlüter®-KERDI-LINE-H or -V drainage channels
- Schlüter®-KERDI-LINE A, B or C grate and frame combination
- Schlüter®-KERDI-SHOWER sloped trays and levelling boards
- Schlüter®-DILEX-EKSN movement joint profile for the shower access area
- Schlüter®-RENO-U transition profile for the shower access area
- Schlüter®-KERDI-KEBA sealing tapes
- Schlüter®-KERDI waterproofing membranes
- Schlüter®-KERDI-COLL sealing adhesive

Your retail store:

Further information



... is available in our brochure:

Schlüter-Systems
Innovations for floor level showers

or online at:
www.schluter-systems.com

Perfectly matching system products:

Schlüter®-KERDI-LINE

Linear drainage channel

Schlüter®-KERDI-SHOWER

Levelling boards and pre-formed sloped trays

Schlüter®-SHOWERPROFILE

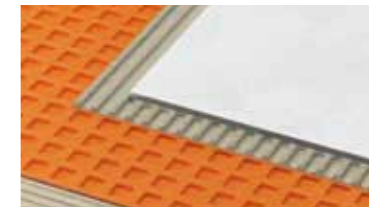
Wall transition and sloped profiles

Other system solutions

Would you like to know more about Schlüter® products and system solutions for tile installation? The following brochures are available from our distribution partners. For more information, please visit our website at www.schluter.co.uk.



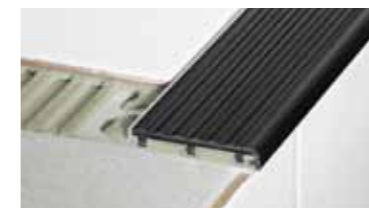
- Schlüter®-DILEX – Profile system for permanently maintenance free movement joints and edge joints



- Schlüter®-DITRA – universal substrate for damage free tile installations



- Schlüter®-KERDI – Secure waterproofing membrane



- Schlüter®-TREP – Slip resistant stair nosing profiles



- Schlüter®-KERDI-BOARD – Substrate, structural panel, bonded waterproofing



- Schlüter®-BEKOTEC-THERM – The ceramic thermal comfort floor



WALL TRANSITION AND SLOPED PROFILES