

Schlüter®-KERDI-BOARD-W

Vanity unit

Installation element made of KERDI-BOARD

12.3

Product data sheet

Application and function

Schlüter-KERDI-BOARD-W is a prefabricated element that can be used to create vanity units with rear horizontal ledge for the fixing of a monobloc tap and providing a storage area, for tabletop mounting (**Schlüter-KERDI-BOARD-WS**) and for wall mounting (**Schlüter-KERDI-BOARD-WW**). Made from the multi-purpose tile installation substrate **Schlüter-KERDI-BOARD**, the vanity units can be clad with tiles directly using cementitious tile adhesive. They can be free-floating using the optionally available **KERDI-BOARD-AB** wall brackets or installed in niches and wall corners with the aid of 50 mm **KERDI-BOARD** (as supports, individually and easily adapted to local conditions). (See also the corresponding data sheet 12.1)

The supplied drain adapter has a permanently attached elasticated KERDI waterproofing collar and a 1¼" connection thread for connecting commercially available traps. The prefabricated KERDI-KERS corner pieces can be used to create a reliable waterproofing connection to the adjoining wall.

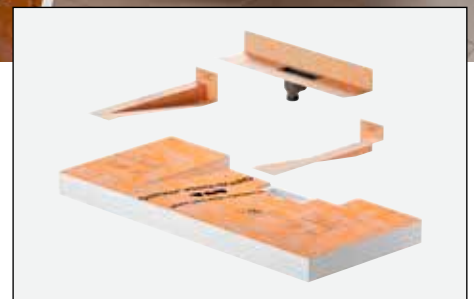
Schlüter-WASHBASIN-PROFILES are multi-component products for the optional cladding of the washbasin sides as well as an edge profile for the back of the WS vanity unit version, which can be used as an alternative to tiles when tiling the vanity unit.

Two designs from the **KERDI-LINE-VARIO** family, **COVE** and **WAVE**, are available as drainage profiles. These can be individually cut to size, are height adjustable and are shipped with 2 matching end caps. (See also the corresponding data sheet 8.10.)



The **Schlüter-KERDI-BOARD-WDP** drainage profile, design **INCOVE**, can be used with the WS vanity unit version to create attractive shadow joint drainage. The prefabricated profile with welded end caps can be used up to a tile thickness of 11 mm. For thicker tiles, the profile can be individually cut to size and can be fitted with the enclosed end caps.

Our LIPROTEC system offers an extensive range of profiles for custom illumination of the washbasin/vanity unit.



Schlüter-KERDI-BOARD-WW



Schlüter-KERDI-BOARD-WS



Material

Schlüter-KERDI-BOARD-W is a composite material and consists of 4 layers of extruded rigid XPS foam with board thicknesses of 28 mm, 2x 25 mm and 5 mm (KERDI-BOARD-WW) or 28 mm, 27 mm, 25 mm and 5 mm (KERDI-BOARD-WS). The surfaces of the 28 mm and 5 mm boards are laminated with a special, cement-free reinforcement material and a fleece fabric on both sides for effectively anchoring cementitious tile adhesive or rendered covering materials. The fabric features a 10 x 10 mm printed gridline pattern for easier cutting. The boards are fully bonded. KERDI-BOARD-WS also has an integrated reinforcement layer to stabilise the fitting.

The brackets consist of a 6 mm thick flange and a rigidly welded rectangular tube of dimensions 50 x 25 x 2 mm. Both parts are made of galvanised structural steel 235JR.

The connection adapter is made of highly impact-resistant PP (polypropylene).

The KERDI waterproofing collar that is bonded on the drain adapter and the pre-fabricated moulded KERDI-KERS corner parts for connecting to the bonded waterproofing is made from a polyethylene membrane. (see product data sheet 8.1)

The triangular profiles made of brushed stainless steel V4A or aluminium with a high-quality powder coating have fleece on the back for anchoring in the tile adhesive. The INCOVE profile and the enclosed end caps are made of stainless steel V4A (material no.: 1.4404 = AISI 316L) with a brushed surface.

Material properties and areas of application:

The surface of the Schlüter-KERDI-BOARD vanity units is waterproof and resistant to any chemical stresses that typically occur in conjunction with ceramic tiled coverings. Where required, a certified bonded waterproofing assembly can be created with Schlüter-KERDI or KERDI-BOARD.

KERDI-BOARD vanity units have a flat surface and are resistant to warping, ageing and are highly stable, even when exposed to temperature or humidity on one side.

They are ideal for a wide variety of applications.

Substrates must be checked for sufficient stability and other project-related requirements.

The wall brackets are versatile and can be used in the bathroom, for example, as a practical solution for saving space and creating a tidy appearance. Wall-mounted KERDI-BOARD vanity units can also be used to construct barrier-free installations.

They are made of robust material and are extremely stable and durable.

Note:

After installation and covering with tiles or natural stone, the KERDI-BOARD-WS and KERDI-BOARD-WW vanity units can bear a load of up to 50 kg if correctly installed.

The WASHBASINPROFILE-WS and -WW triangular profiles are available in a wide variety of different finishes. Their suitability must be verified in applications exposed to chemical or mechanical stresses. The information provided below is intended as a general guideline.

The WASHBASINPROFILE-WS and -WW with TS coating (aluminium textured coating) feature surfaces with a natural appearance. The aluminium is suitably pre-treated and then powder coated with a polyurethane covering. The colour-stable coating is UV and weather-resistant. Visible edges must be protected against abrasion or scratching.

The WASHBASINPROFILE-WS and -WW made of stainless steel V4A (material no. 1.4404 = AISI 316L) with a brushed surface, are ideal when high mechanical or specific chemical loads can be expected.

Even stainless steel of quality 1.4404 is not resistant to all chemical stresses and may be affected by hydrochloric and hydrofluoric acid or certain chloride and brine concentrations that can occur in cleaning agents or swimming pools. Suitability for particular anticipated stresses should therefore be verified in advance.

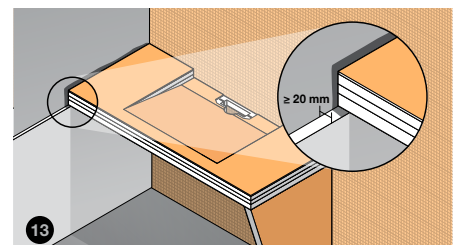
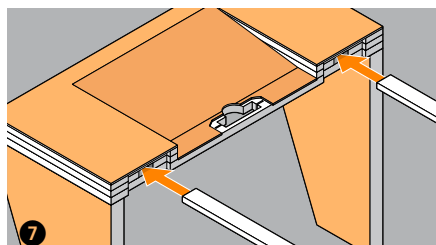
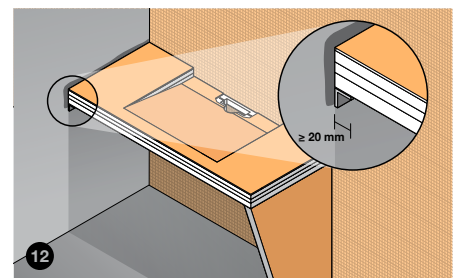
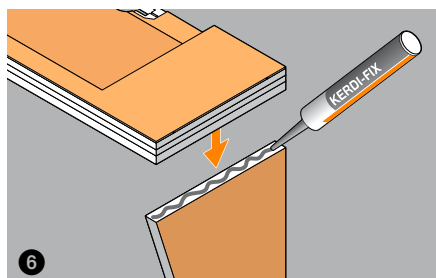
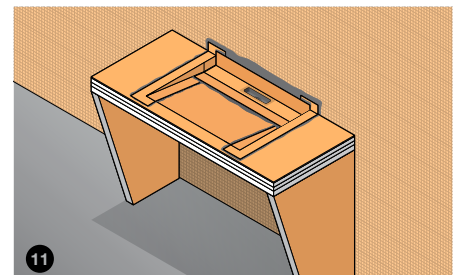
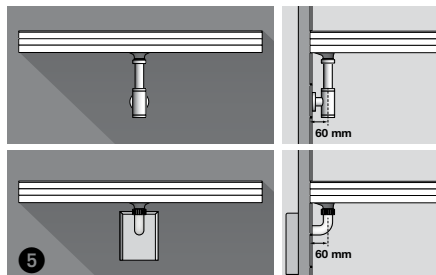
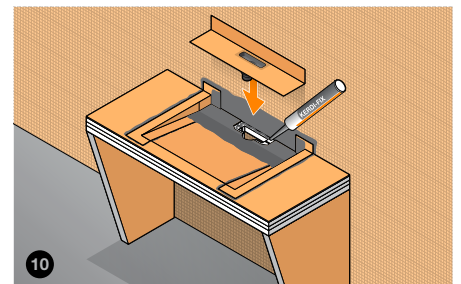
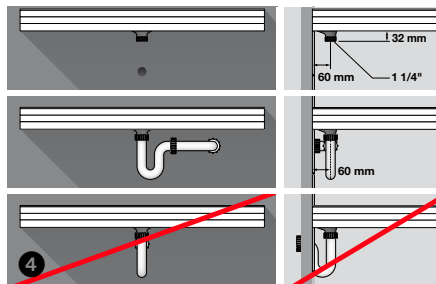
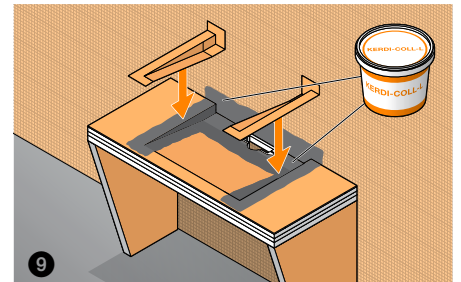
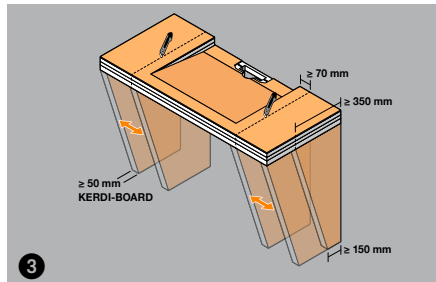
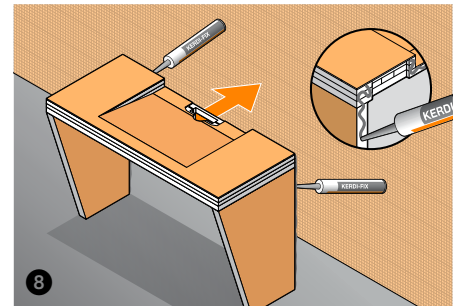
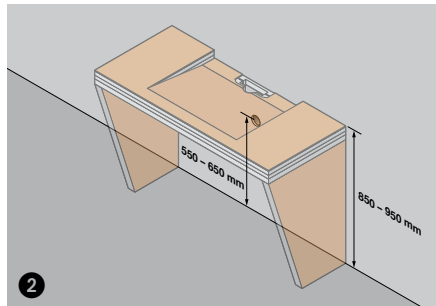
The KERDI-BOARD-WDP drainage profile, design INCOVE, made of brushed stainless steel V4A (material no. 1.4404 = AISI 316L) is particularly well suited for applications that, in addition to high mechanical strength, require resistance to chemicals such as acidic or alkaline media and cleaning agents. (For further properties, see WASHBASINPROFILE made of brushed stainless steel V4A.)



Areas of application and installation

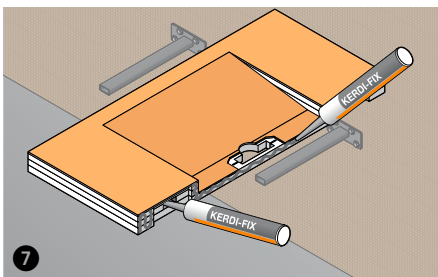
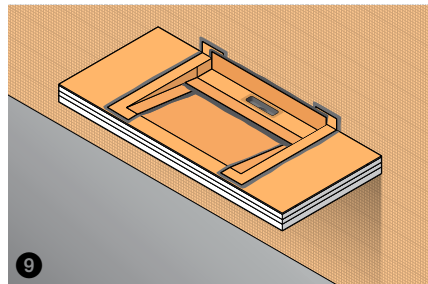
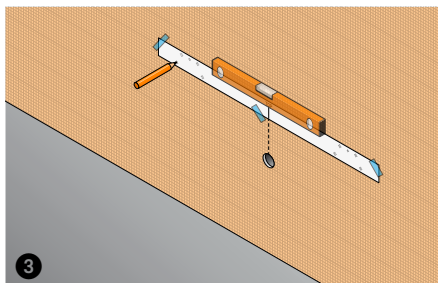
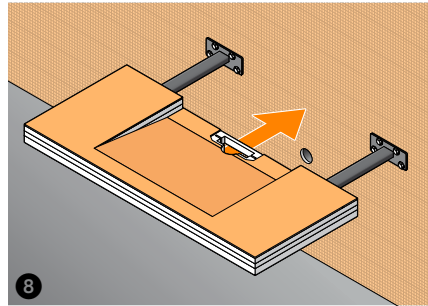
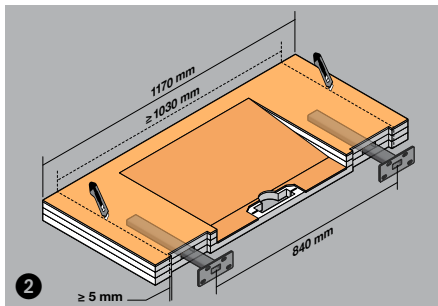
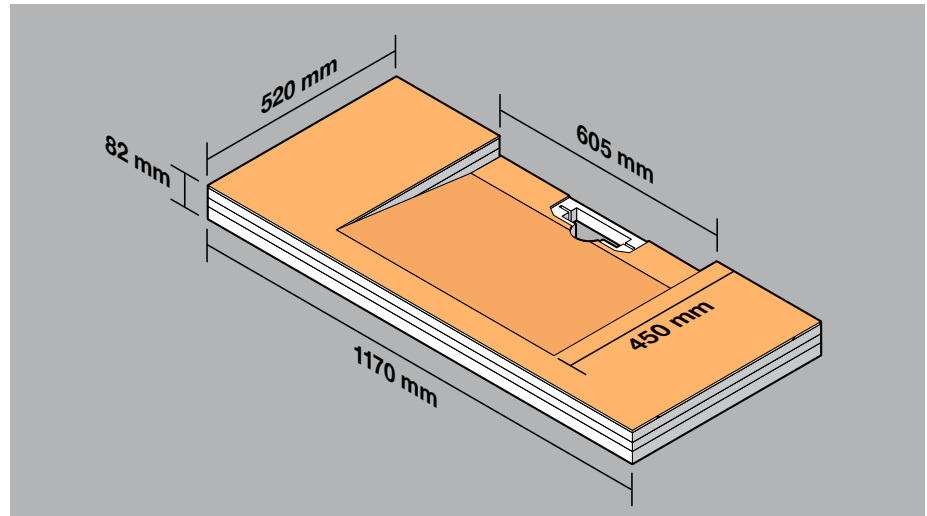
KERDI-BOARD-WW – Free-standing installation on support feet and niche installation:

1. Determine the installation heights as shown in Fig. 2
2. As shown in Fig. 3, the KERDI-BOARD washbasin/vanity unit can, if desired, be reduced in width. For free-standing installation, two supports made of at least 50 mm thick KERDI-BOARD are used that can be positioned variably to left and right between the basin and the ends of the vanity unit.
3. As shown in Fig. 4, due to the connection being near to the wall, careful consideration should be given to the selection of the trap. As shown in Figure 5, a design bottle trap or, preferably, a concealed trap should be used.
4. Bond the components with the installation adhesive Schlüter-KERDI-FIX that is supplied with the set (Fig. 6 and 8). Insert the supplied filler pieces into the openings (Fig. 7).
5. Adhere the KERDI-KERS waterproofing collars included in the set for waterproofing, using the sealing adhesive Schlüter-KERDI-COLL-L (not included). (Fig. 9) Additionally, seal the drain adapter with KERDI-FIX in the area of the drain opening (Fig. 10).
6. For niche installation, make sure the support or bracket provides at least 20mm support along the full depth (front to back) of the vanity unit (Fig. 12 and 13).





Schlüter-KERDI-BOARD-WW Dimensions



KERDI-BOARD-WW – Floating installation with optionally available wall brackets.

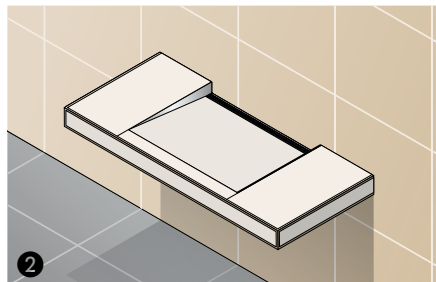
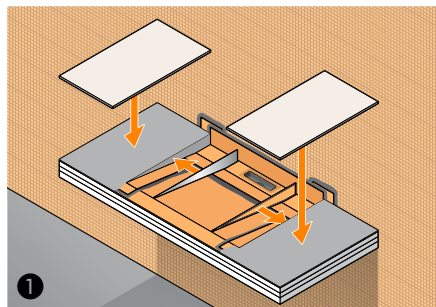
Caution: The installation substrate must be level, even and capable of taking the required loading.

1. As shown in (Fig. 2), the KERDI-BOARD washbasin/vanity unit can, if desired, be reduced in width.
2. KERDI-BOARD-AB is installed according to the enclosed mounting instructions
3. Mark the drilling holes with the supplied drilling template (Fig. 3).
4. Apply a sufficient amount of KERDI-FIX installation adhesive to the back of the vanity unit (Figure 7) and slide it onto the KERDI-BOARD-AB wall brackets (Figure 8) to create a firm connection with the wall.
5. Adhere the KERDI-KERS waterproofing collars included in the set for waterproofing, using the sealing adhesive KERDI-COLL-L (not included). (Fig. 9) Seal the drain adapter with KERDI-FIX in the area of the drain opening.



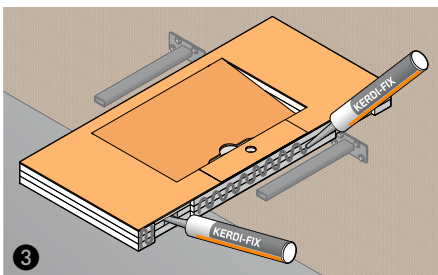
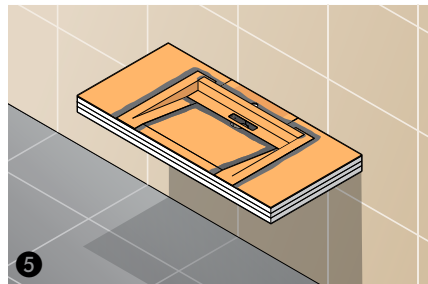
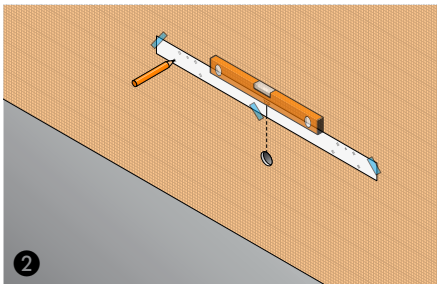
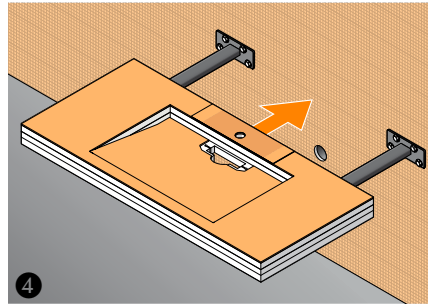
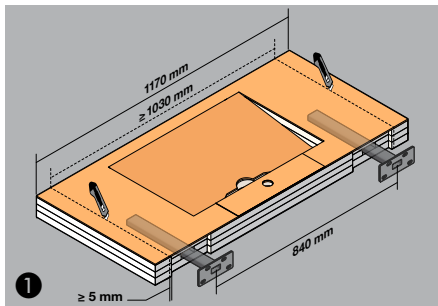
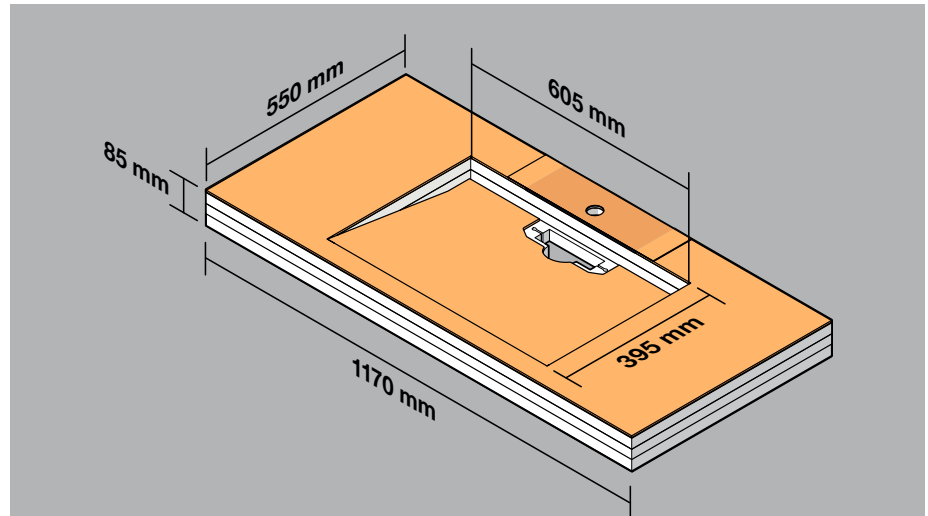
Schlüter-WASHBASINPROFILE-WW Installation of triangular profiles for KERDI-BOARD-WW:

1. Apply a suitable tile adhesive, lay the tiles on the storage surface and press down lightly to ensure good adhesion (Figure 1).
2. Press the WASHBASINPROFILE-WAS into the still wet tile adhesive on the side surfaces and carefully align them so they are straight and level (Figure 1).
3. Make sure that the top edge of the profile is flush with the surface of the tile above.
4. Tile the remaining surfaces of the vanity unit (Figure 2).





Schlüter-KERDI-BOARD-WS Dimensions



KERDI-BOARD-WS – Floating installation with optionally available wall brackets:

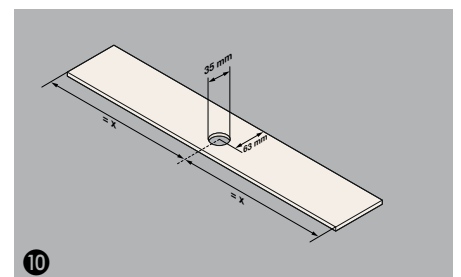
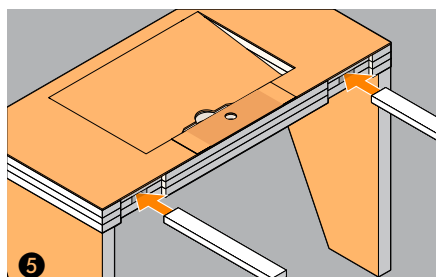
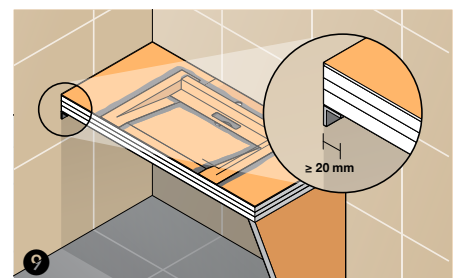
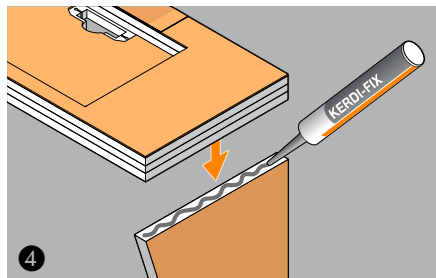
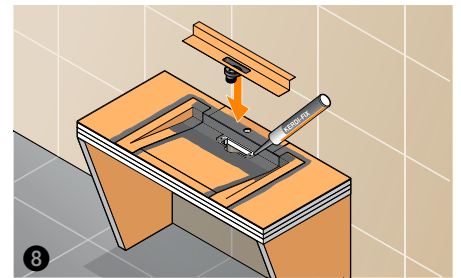
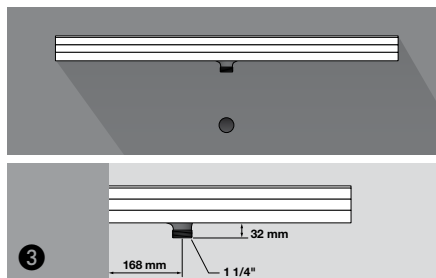
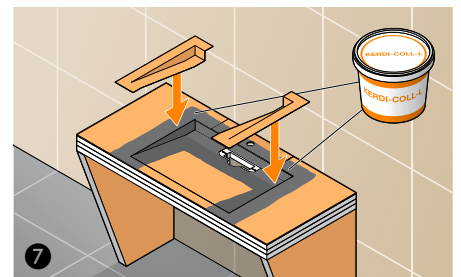
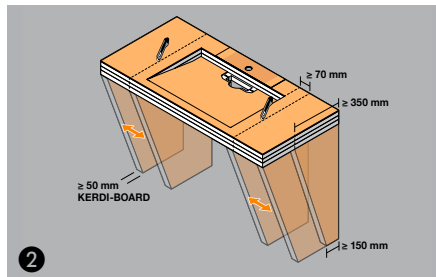
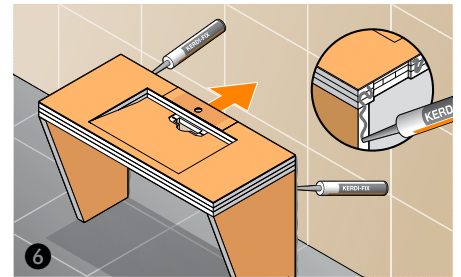
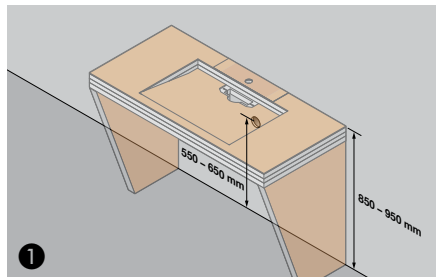
Caution: The installation substrate must be level, even and capable of taking the required loading

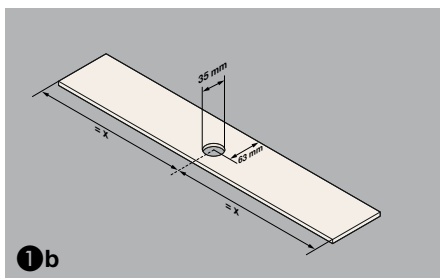
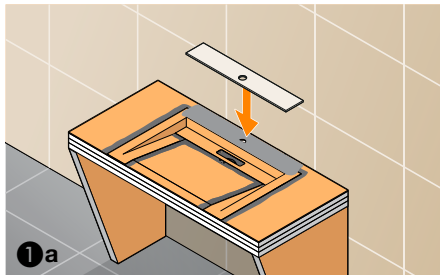
1. As shown in (Figure 1), KERDI-BOARD-WS can, if desired, be reduced in width.
2. Mark the drilling holes with the supplied drilling template (Fig. 2).
3. Apply a sufficient amount of KERDI-FIX to the back of the vanity unit (Fig. 3) and slide it onto the wall brackets (Fig. 4) to create a firm connection with the wall.
4. Adhere the KERDI-KERS waterproofing collars included in the set for waterproofing, using the sealing adhesive KERDI-COLL-L (not included in the scope of supply).
5. Also seal the drain adapter with KERDI-FIX in the area of the pipe penetration.



KERDI-BOARD-WS – Free-standing installation on support feet and niche installation:

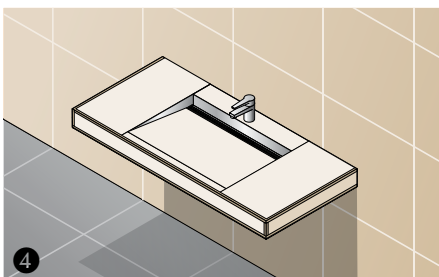
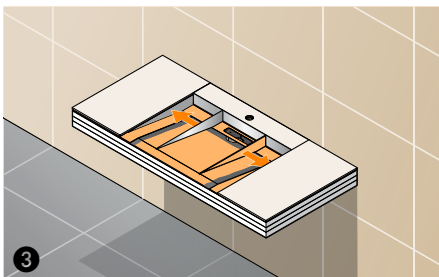
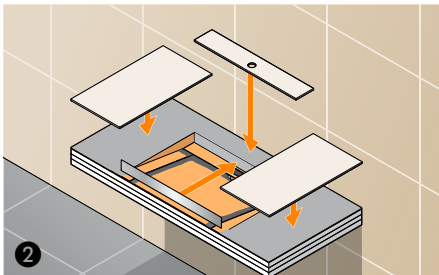
1. Determine the installation heights as shown in Figure 1
2. The KERDI-BOARD vanity unit can, if desired, be reduced in width as shown in Figure 2. For free-standing installation, two supports made of at least 50 mm thick KERDI-BOARD are used that can be positioned variably to left and right between the basin and the ends of the vanity unit.
3. Care should be taken to select a trap that fits (Figure 3).
4. The components are fitted together with the KERDI-FIX installation adhesive (Figures 4 and 6) included in the set. Insert the supplied filler pieces into the cavities (Figure 5).
5. Waterproofing is achieved by increasing the amount of Schlüter-KERDI-COLL-L sealant adhesive (not included in the scope of supply), Figure 7. The drain adapter is then also sealed in the area of the pipe penetration with KERDI-FIX (Figure 8).
6. For installation in a niche, make sure the support or bracket provides at least 20 mm support along the full depth (front to back) of the vanity unit (Figure 9).
7. When ready for tiling, it is advisable to prepare and install the tile in the area around the fitting. This will necessitate drilling a suitable hole in the tile using a diamond drill bit (not included in the scope of supply) (Figure 10).





Schlüter-WASHBASINPROFILE-WS Installation of triangular profiles for KERDI-BOARD-WS:

1. First prepare and install the tile in the area around the fitting.
This will necessitate drilling a hole in the tile, using a diamond drill bit (not included in the scope of supply).
2. Glue the WASHBASINPROFILE-WAR into the still wet tile adhesive on the front side and align to the upper tile (Figure 2).
3. Lay the tiles on the storage surface and press down lightly to ensure good adhesion (Figure 2).
4. Press the WASHBASINPROFILE-WAS into the still wet tile adhesive on the side surfaces and carefully align them so they are straight and level (Figure 3).
5. Make sure that the top edge of the profile is flush with the surface of the tile above.
6. Tile the remaining surfaces of the vanity unit (Figure 4).





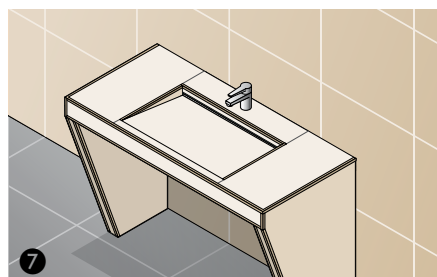
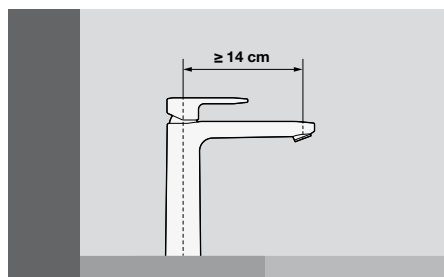
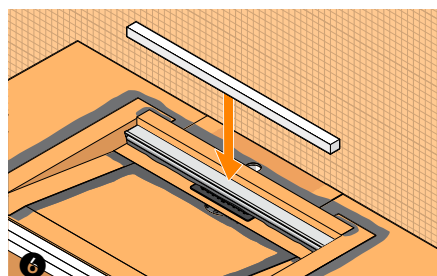
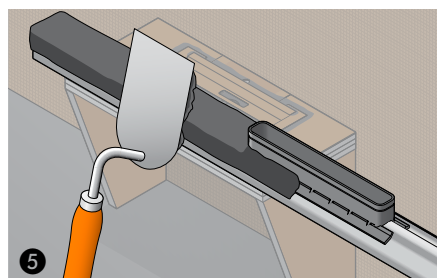
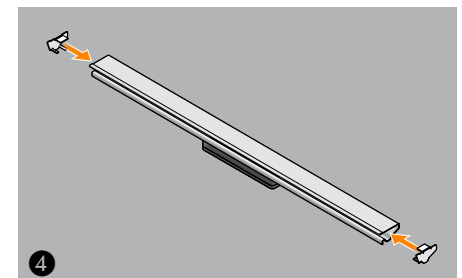
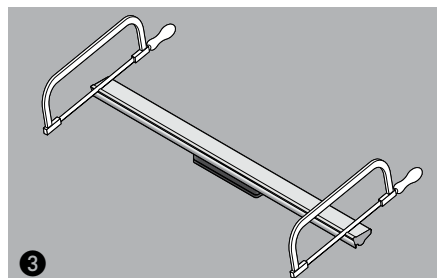
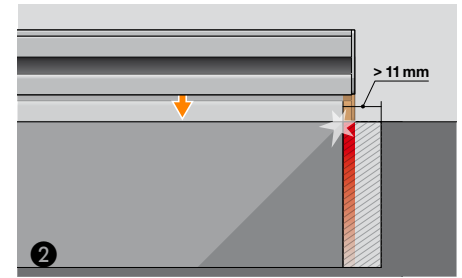
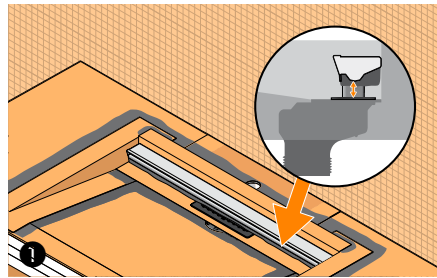
Installation of Schlüter-KERDI-BOARD-WDP drainage profile, design INCOVE, for Schlüter-KERDI-BOARD-WS

1. Set the KERDI-BOARD-WDP drainage profile, design INCOVE, without tile adhesive into the final position in the height adjustment option to determine the dimensions for the floor tile (Figure 1).
2. If the selected tile is > 11 mm thick (Figure 2), shorten the profile accordingly (Figure 3) and fit the enclosed end caps on both sides (Figure 4).
3. The KERDI-BOARD-WDP drainage profile, design INCOVE, must be inserted with tile adhesive (Figure 5).
4. Use the double-sided adhesive tape already applied to glue the XPS strips supplied to the top of the profile (Figure 6).
5. Firmly install the floor tiles using suitable tile adhesive.
6. Tile the remaining surfaces of the vanity unit (Figure 7).

Note:

The Schlüter-KERDI-BOARD-WDP drainage profile, design INCOVE, is not compatible with Schlüter-WASHBASINPROFILE-WS and -WW triangular profiles.

When using the COVE and WAVE drainage profiles, follow the installation recommendations in data sheet 8.10.



Notes

The WASHBASINPROFILE-WS and -WW require no special maintenance or care. The profile can be cleaned along with the covering, using suitable detergents.

All cleaning agents must be free of hydrochloric and hydrofluoric acid. Avoid contact with other metals, such as regular steel, to prevent corrosion. This also includes installation tools such as trowels or steel wool, e.g. for the removal of mortar residue.

Do not use abrasive cleaning agents on the sensitive surfaces.

For simple periodic cleaning of the drainage channel and the drain area, the set for the vanity unit includes particularly suitable cleaning brushes with instructions for use.

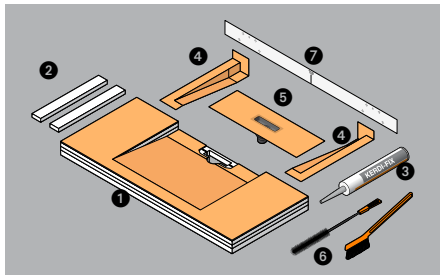
The visible areas of the WASHBASINPROFILE-WS and -WW with brushed surfaces can be polished using chrome-polishing products. If necessary, we recommend using the stainless steel cleaning polish Schlüter-CLEAN-CP.

It is recommended to regularly remove dirt and other residue (for example with a scrubbing brush) to maintain the non-slip function of the treads. Stainless steel surfaces exposed to the environment or aggressive substances should be cleaned periodically using a mild household cleaner. Regular cleaning not only maintains the neat appearance of stainless steel, but also reduces the risk of corrosion.



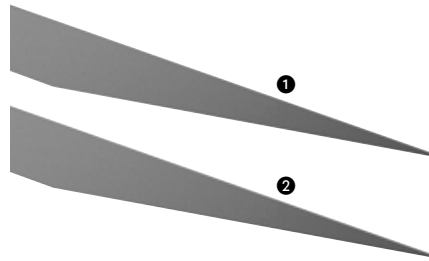
Product overview:

Schlüter®-KERDI-BOARD-WW



1. Vanity unit
2. Filler pieces
3. KERDI-FIX
4. KERDI-KERS
5. Drain adapter with 1¼" threaded socket
6. Cleaning brushes
7. Drilling template

Schlüter®-WASHBASINPROFILE-WW



- Triangular profiles for KERDI-BOARD-WW only
1. Left triangular profile WAS V1
 2. Right triangular profile WAS V1

Technical specifications

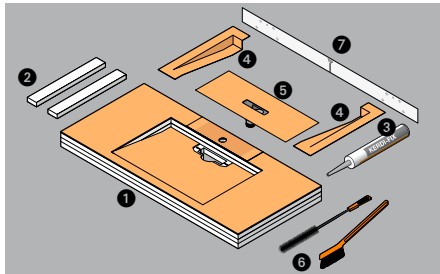
Vanity unit:

Temperature resistance	-50 to +75 °C
Material density (rigid foam) DIN EN 1602	33 kg/m ³
Water penetration capability	0
Threaded adapter connection	1¼"
Load test according to DIN EN 14688	150 kg (centre, tiled)

Notes

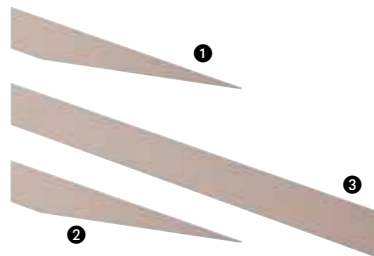
Store KERDI-BOARD washbasin/vanity units on a flat surface or in another suitable form. When stored outside, the component must be protected against direct sun exposure and weather.

Schlüter®-KERDI-BOARD-WS



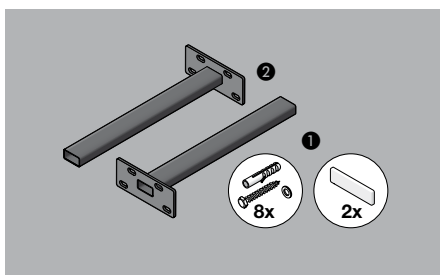
1. Vanity unit
2. Filler pieces
3. KERDI-FIX
4. KERDI-KERS
5. Connection adapter with 1¼" threaded socket
6. Cleaning brushes
7. Drilling template

Schlüter®-WASHBASINPROFILE-WS



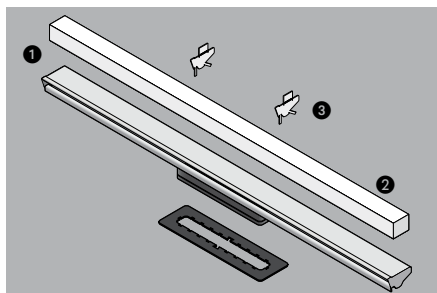
- Triangular profiles for KERDI-BOARD-WS only
1. Left triangular profile WAS V2
 2. Right triangular profile WAS V2
 3. Edge profile WAR R1

Schlüter®-KERDI-BOARD-AB

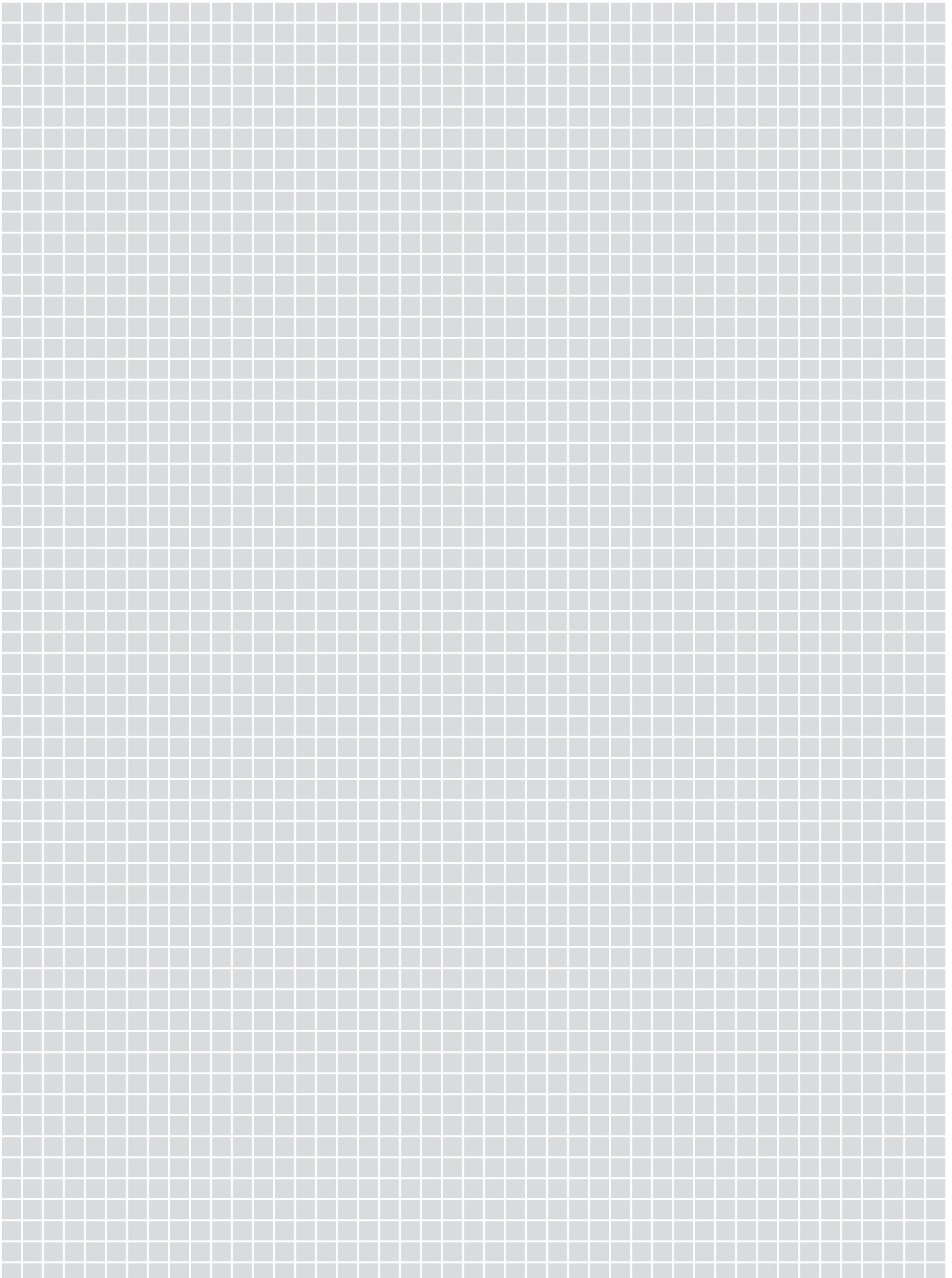


1. Attachment material
2. Vanity support

Schlüter®-KERDI-BOARD-WDP




1. INCOVE drainage profile
2. XPS-Board
3. End caps








Schlüter-Systems KG  Schmölestraße 7 | D-58640 Iserlohn

 +49 2371 971-0  +49 2371 971-1111  info@schlueter.de  schlueter-systems.com

Schlüter-Systems Ltd  Units 3-6 Bardon 22 Industrial Estate | Bardon Hill | Coalville | Leicestershire | LE67 1TE

 +44 (0) 1530 813396  sales@schluter.co.uk  schluter.co.uk